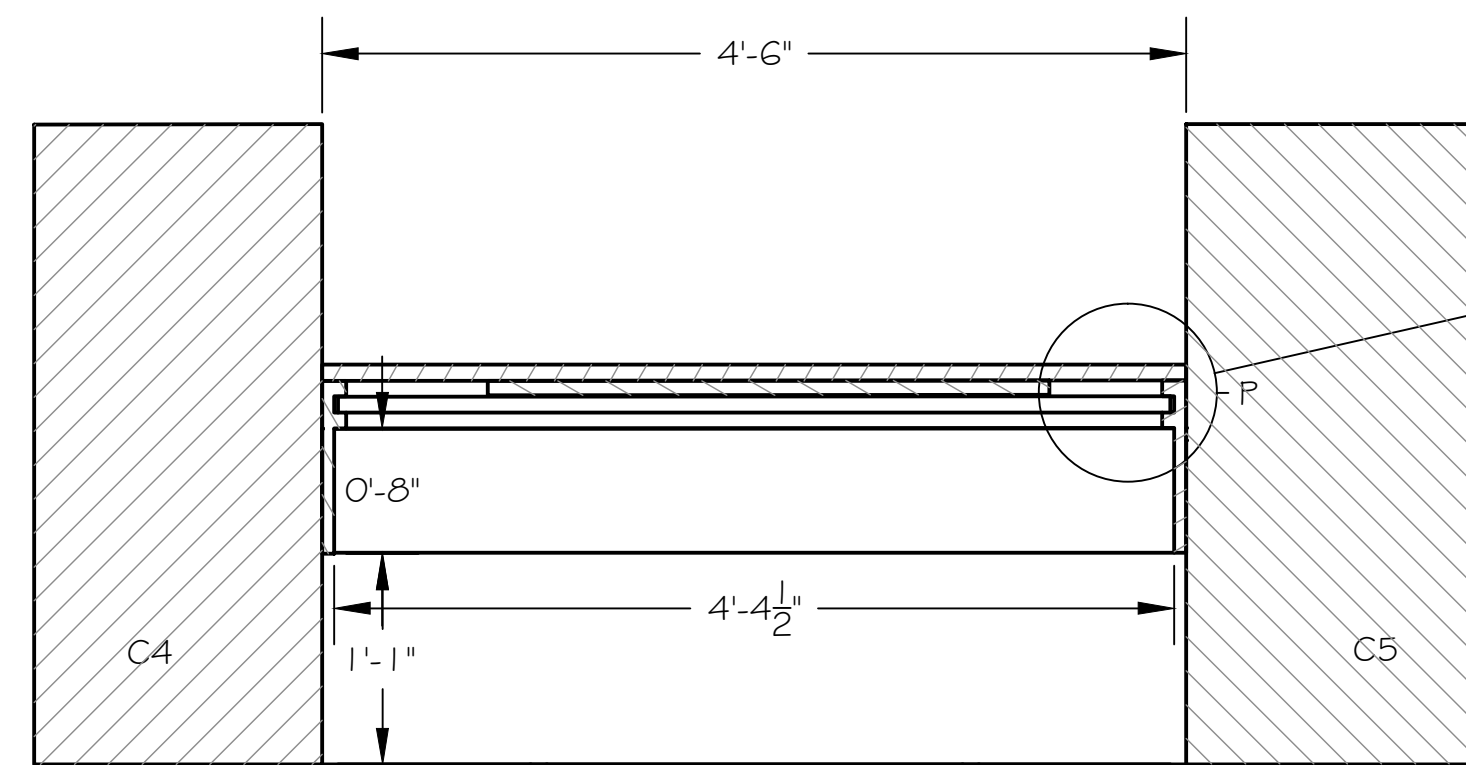
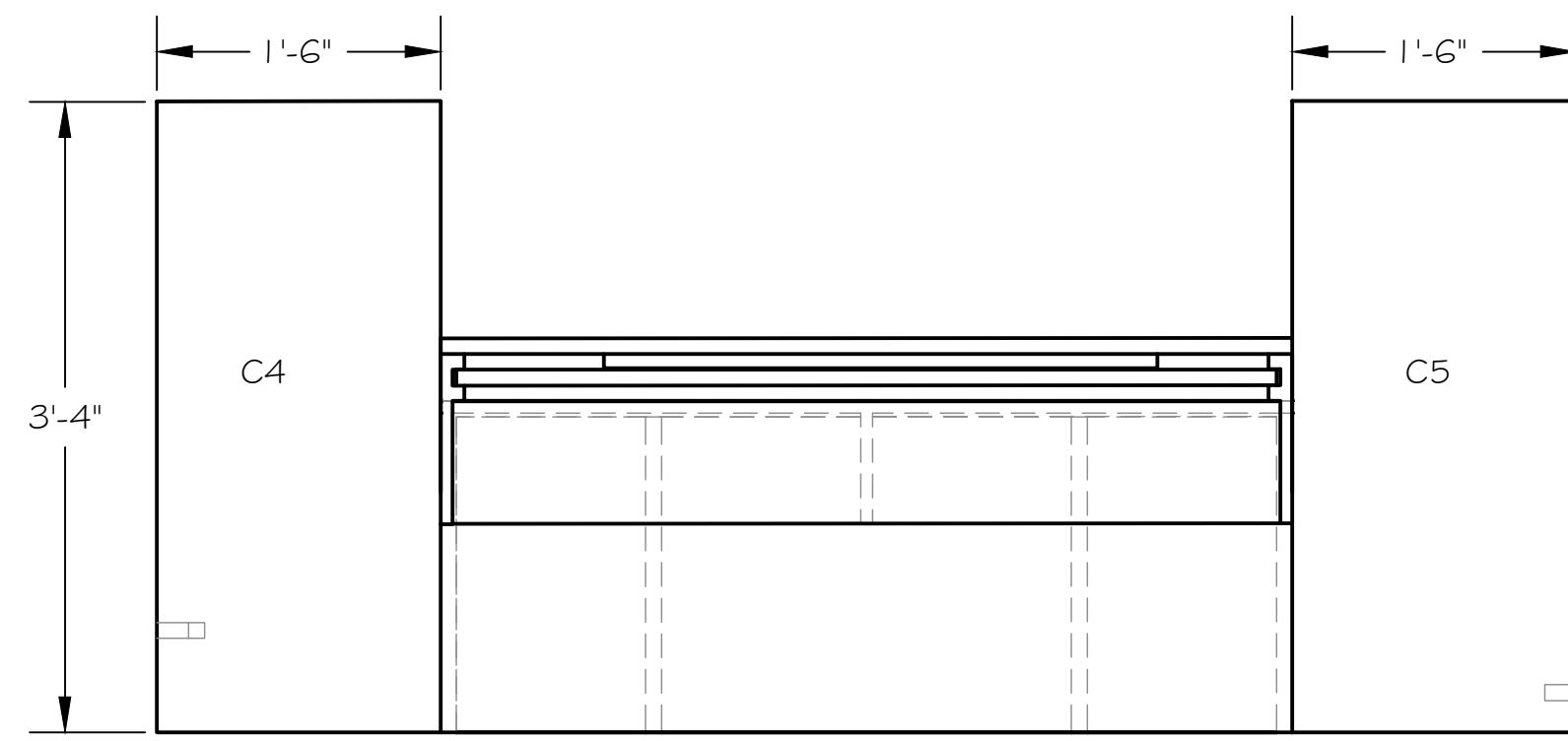
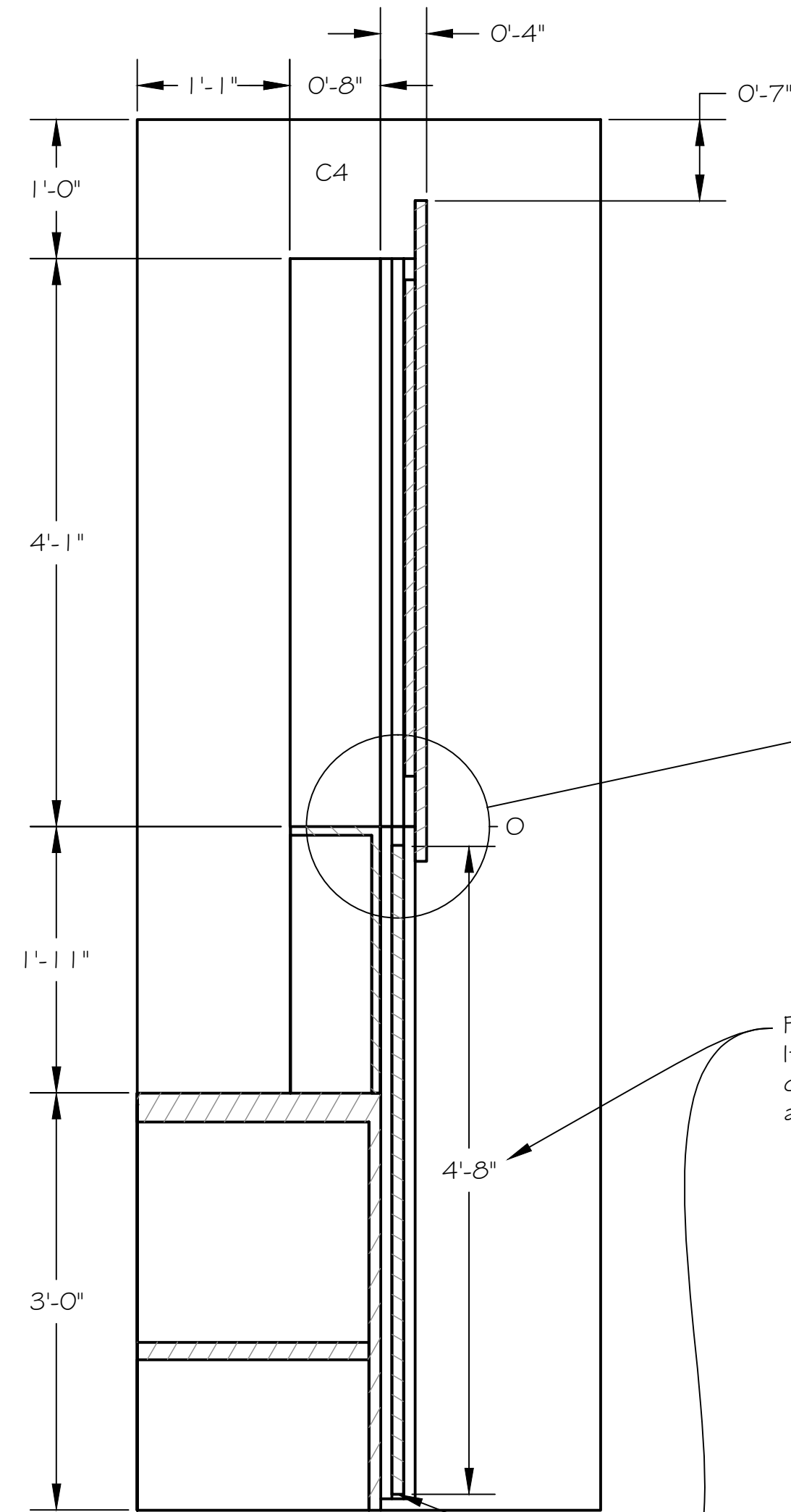
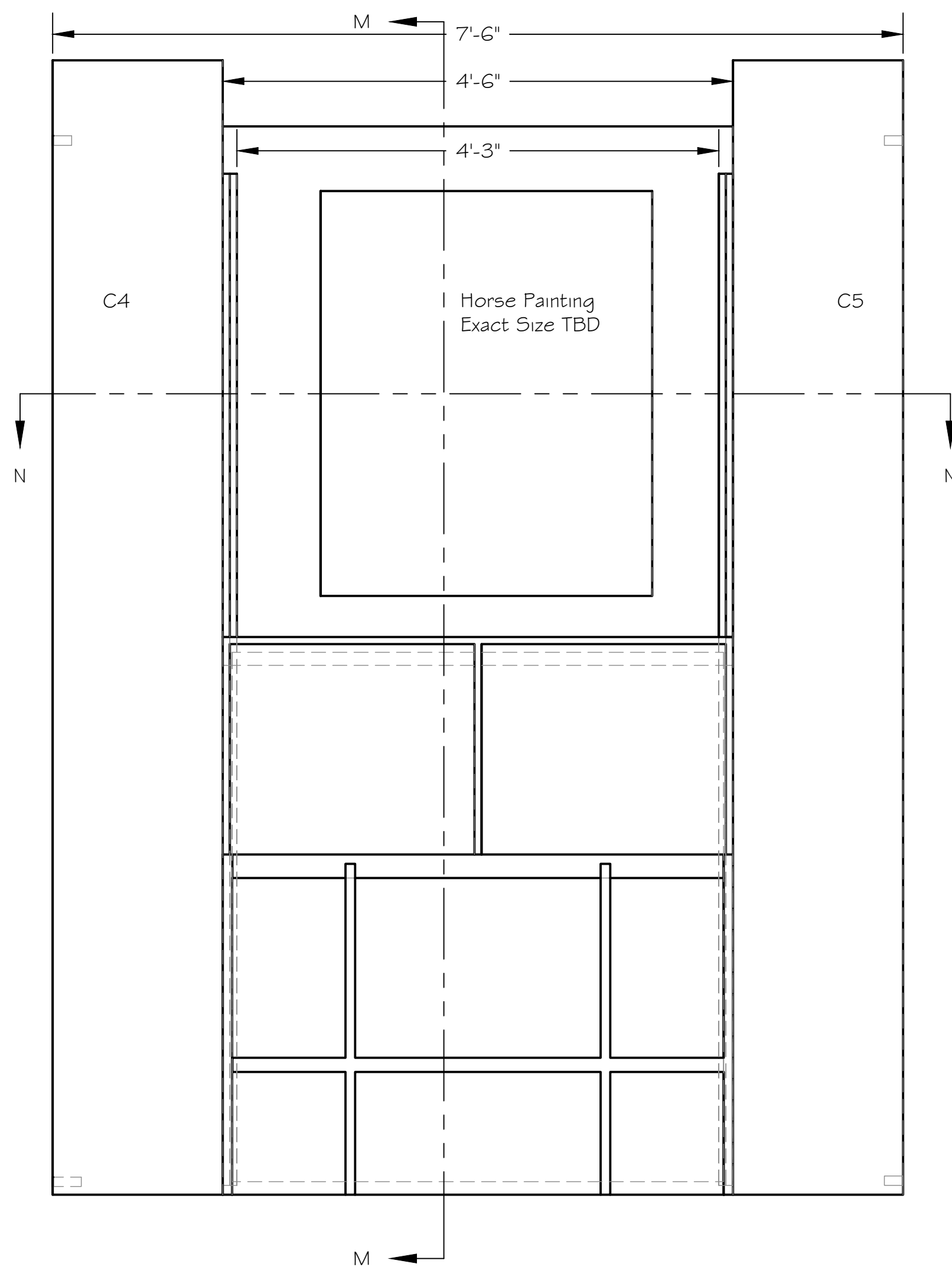
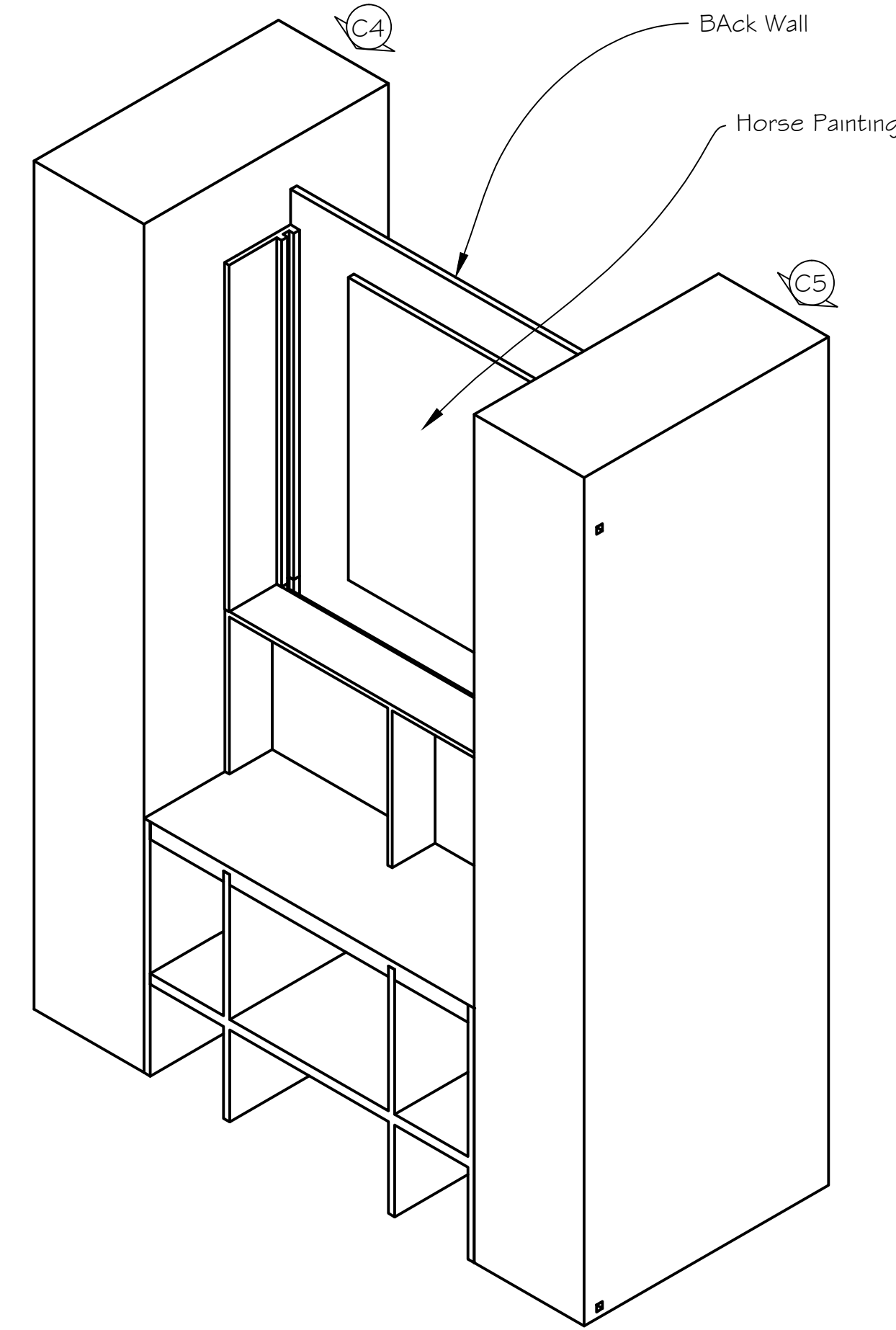
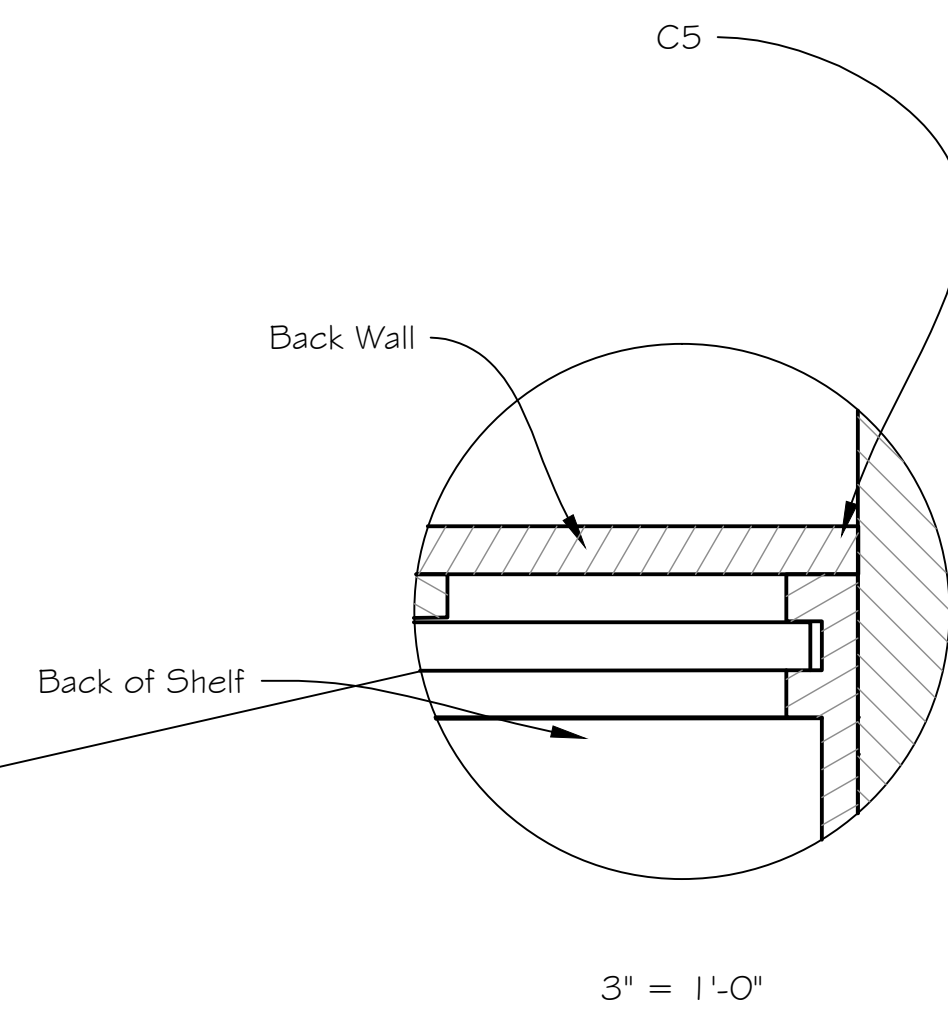


This is a representation of design concepts only! The designer takes no responsibility, and herewith disclaims liability, for the erection, engineering and/or use of any component or concept shown on this or any other drawing. It is the responsibility of the vending companies to erect this design using properly engineered and approved materials, components and methods, including but not limited to local building, fire and safety codes, and all applicable O.S.H.A. standards.

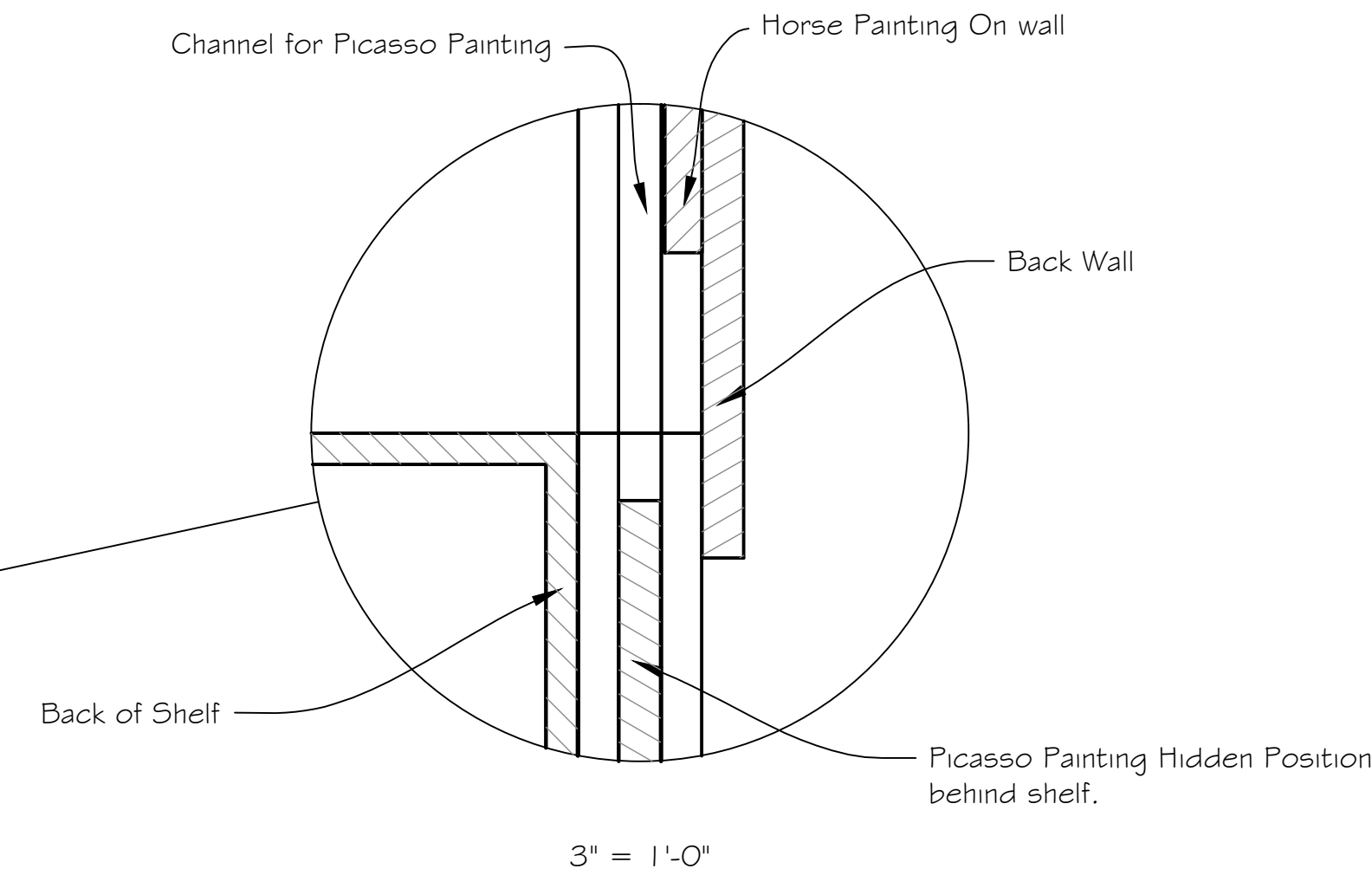
All concepts, ideas, and design elements shown on this drawing and any other documentation are the exclusive intellectual property of Scenographix, Ltd., and may only be used for this project. Any other use is prohibited, unless express written permission has been granted by Scenographix, Ltd.



SECTION N-N
SCALE 1" = 1'-0"



SECTION M-M
SCALE 1" = 1'-0"



Picasso Painting in Channel Hidden. It will be pushed up its channel covering the Back Wall and Horse painting

Back Bar
All Exposed surfaces except Paintings are finished in Dark Wood similar to columns.

The Picasso Painting plays in a vertical channel behind the shelving and in front of the back wall and horse painting. It is revealed by pushing it up 4'-6" from behind the wall hiding the horse painting and back wall.

The shelving, Back Wall, Channels and Side molding should all be one piece for easy transition between Tartuffe and Lapin Agile. The back bar unit attaches to the Columns C4 and C5 for Lapin Agile.

Picasso at the Lapin Agile

Back Bar and Reveal Painting

ACCOUNT EXECUTIVE

DRAWN BY
T McClellan

DATE
18 December 2014

SCALE:
1" = 1'-0"

DRAWING NUMBER

5

DRAWING DATA