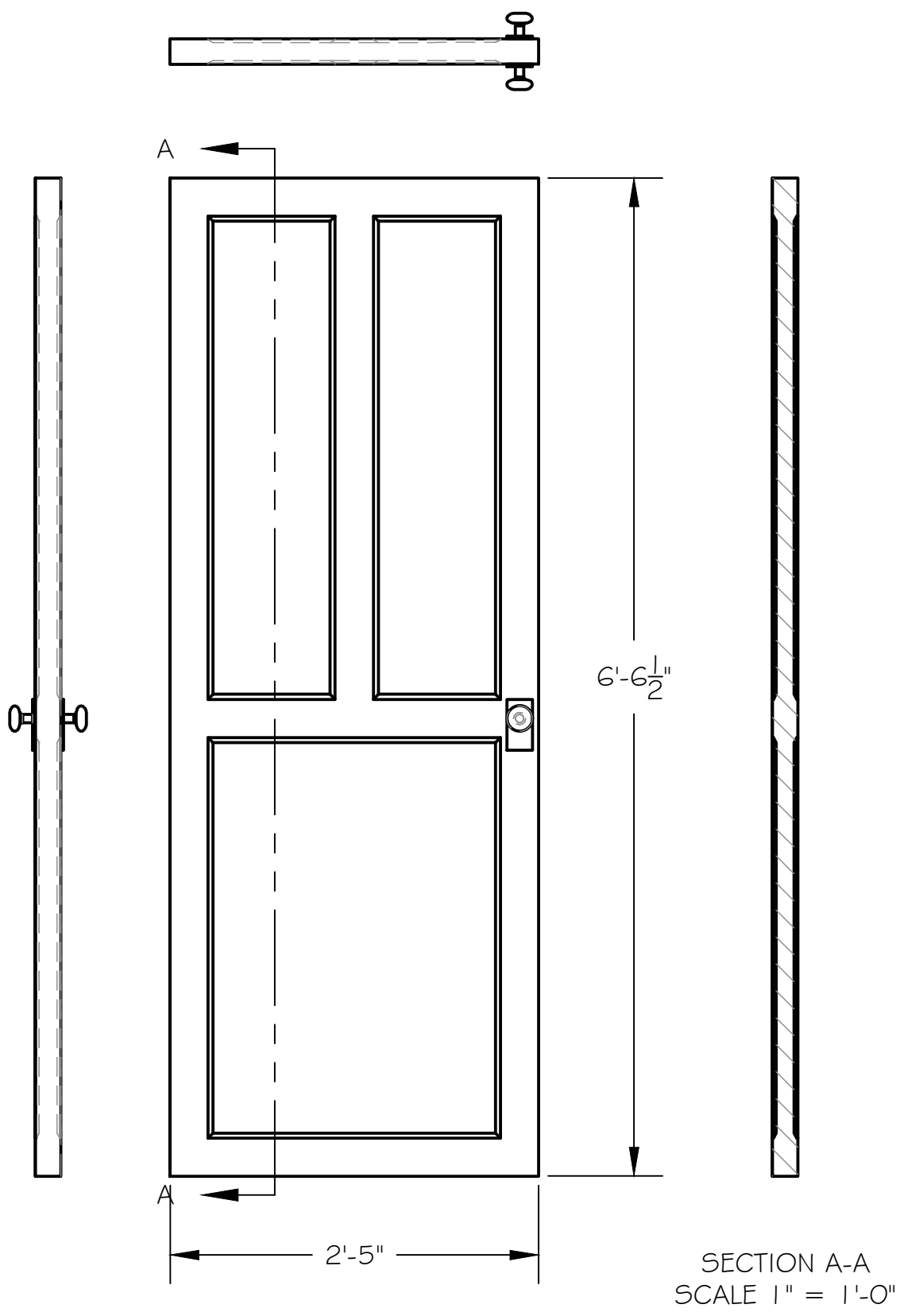


Wall 1 Door.
 Scale: 1" = 1'-0"
 Use Dark Wood Stock Door if possible. Door must have panels but need not match panel layout on door shown below.

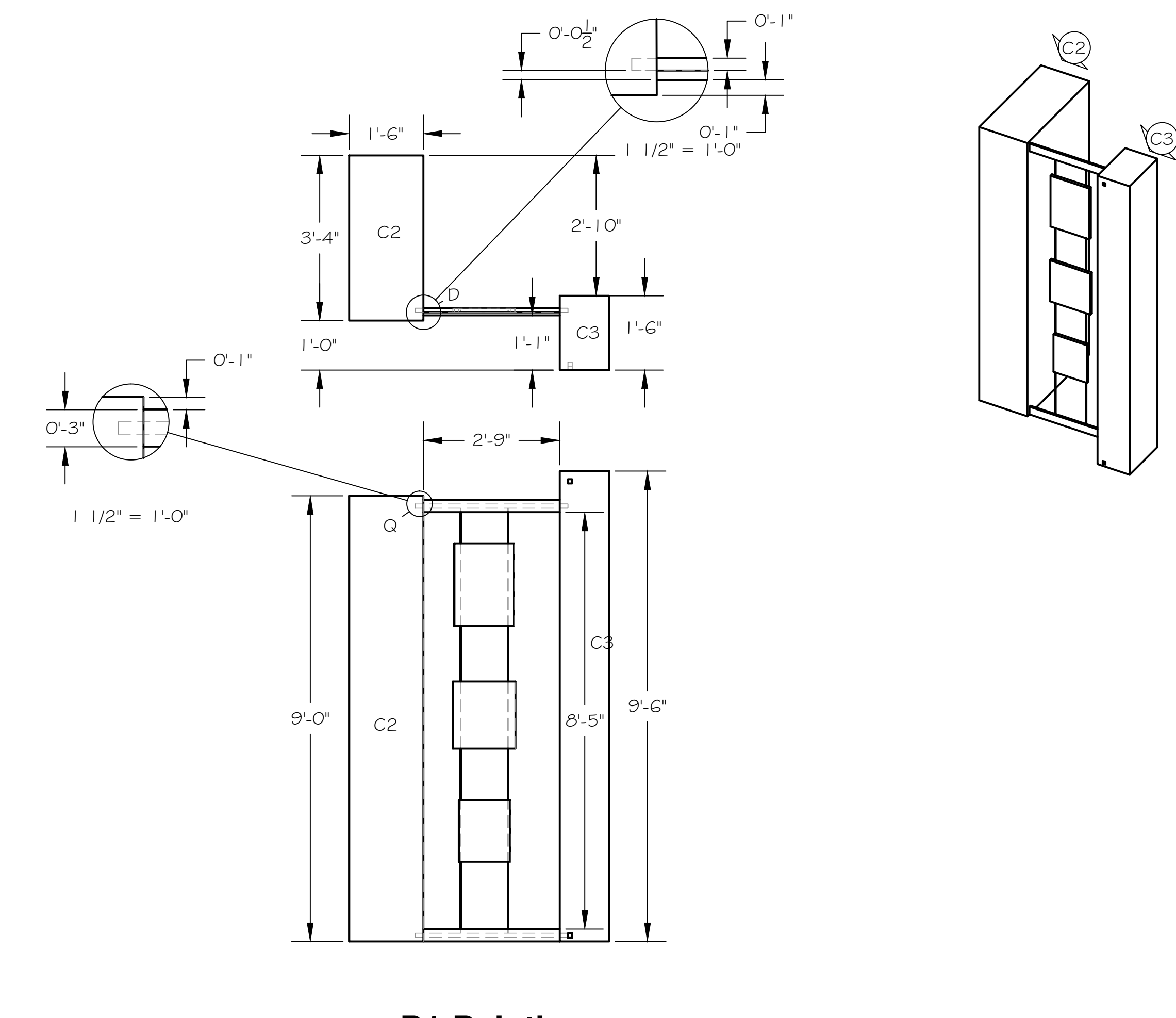
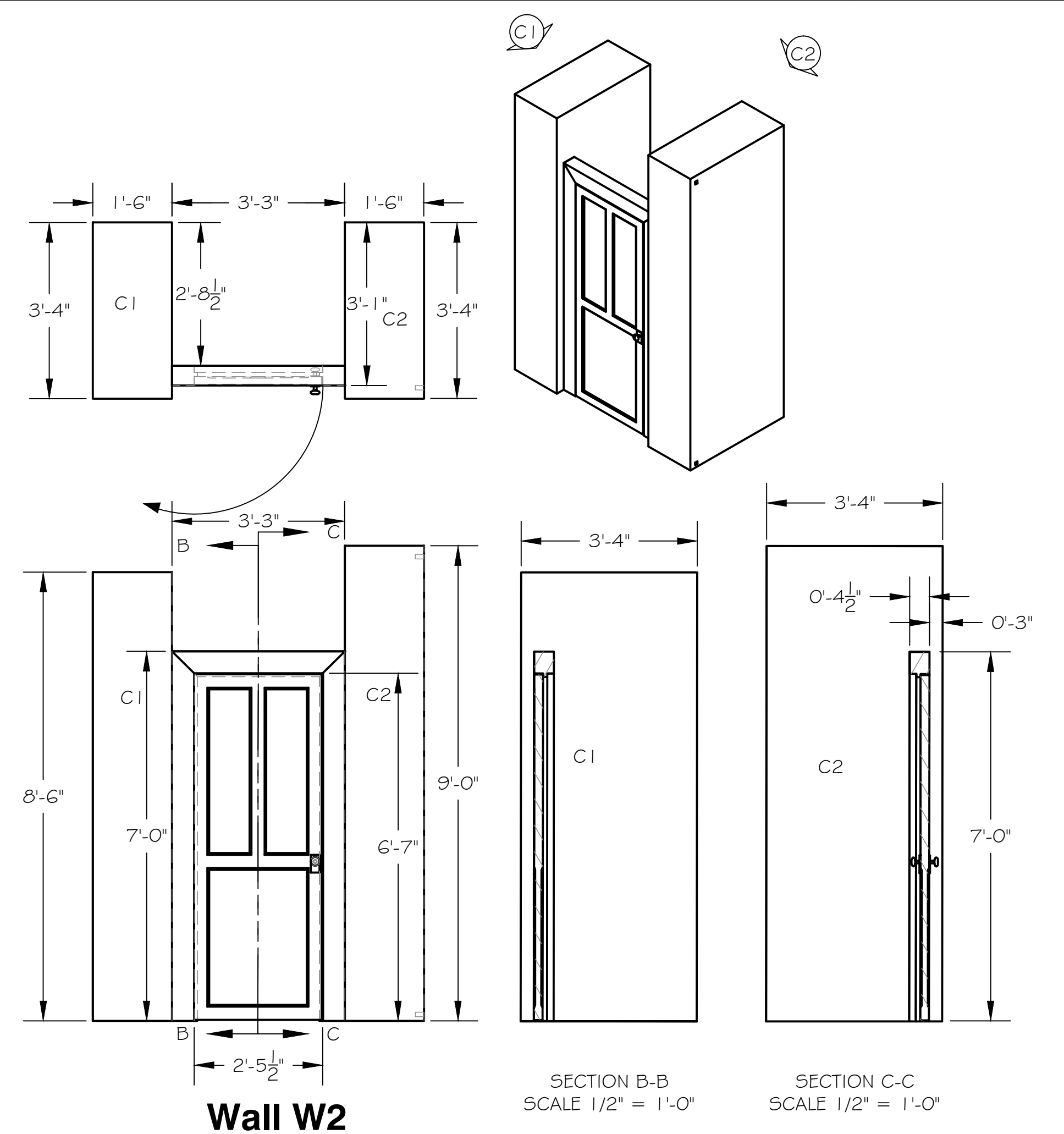


This is a representation of design concepts only! The designer takes no responsibility, and herewith disclaims liability, for the erection, engineering and/or use of any component or concept shown on this or any other drawing. It is the responsibility of the vending companies to erect this design using properly engineered and approved materials, components and methods, including but not limited to local building, fire and safety codes, and all applicable O.S.H.A. standards.

All concepts, ideas, and design elements shown on this drawing and any other documentation are the exclusive intellectual property of Scenographix, Ltd., and may only be used for this project. Any other use is prohibited, unless express written permission has been granted by Scenographix, Ltd.

Picasso at the Lapin Agile

Walls W1, W3, W4, Painting Sections P2 and P3



Wall and Painting Sections
 Walls and Painting Sections are supported by shared columns.

Columns are finished with Dark Wood surface similar to bar, on three sides (2 long sides and d.s. short side).

Painting sections are Printed Paintings without frames attached to cable that is stretched between toggles that connect columns. The toggles are colored the same wood finish as the columns. The toggles must be removable for Tartuffe.

Paintings are printed and mounted to light weight stiff backing. Backing is attached to vertical cables described above.

Paintings, toggles, and cable should be one piece for easy transition between Tartuffe and Lapin.

The Wall section W1 contains the Back Hall door. It opens off and downstage. The door frame is the same dark wood finish that is on the Columns as is the door. If possible, do not build door. Use one from stock. If dimensions need to change, please notify designer.

ACCOUNT EXECUTIVE
DRAWN BY T McClellan
DATE 18 December 2014
SCALE: 1/2" = 1'-0"
DRAWING NUMBER 6
DRAWING DATA