

Corners:

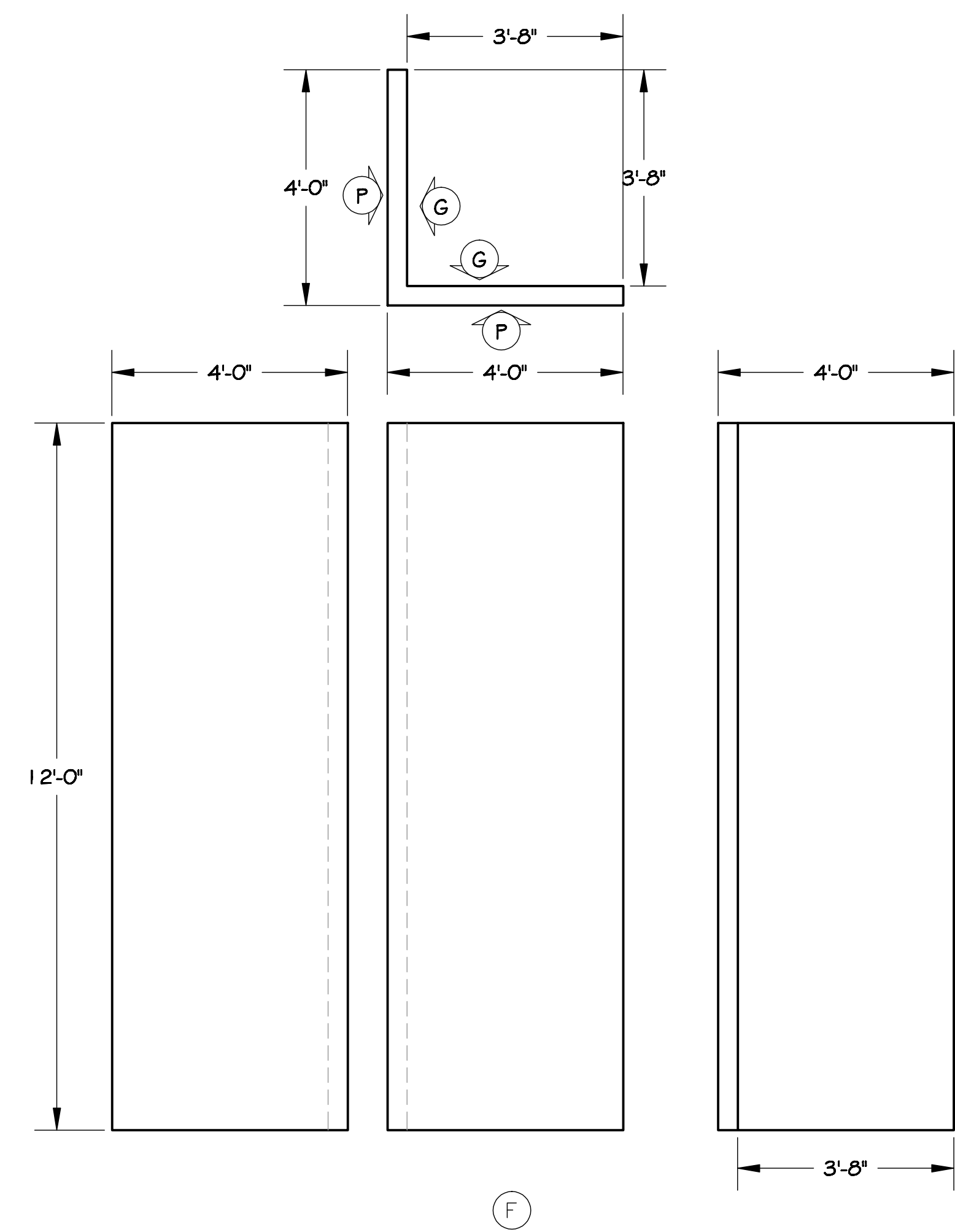
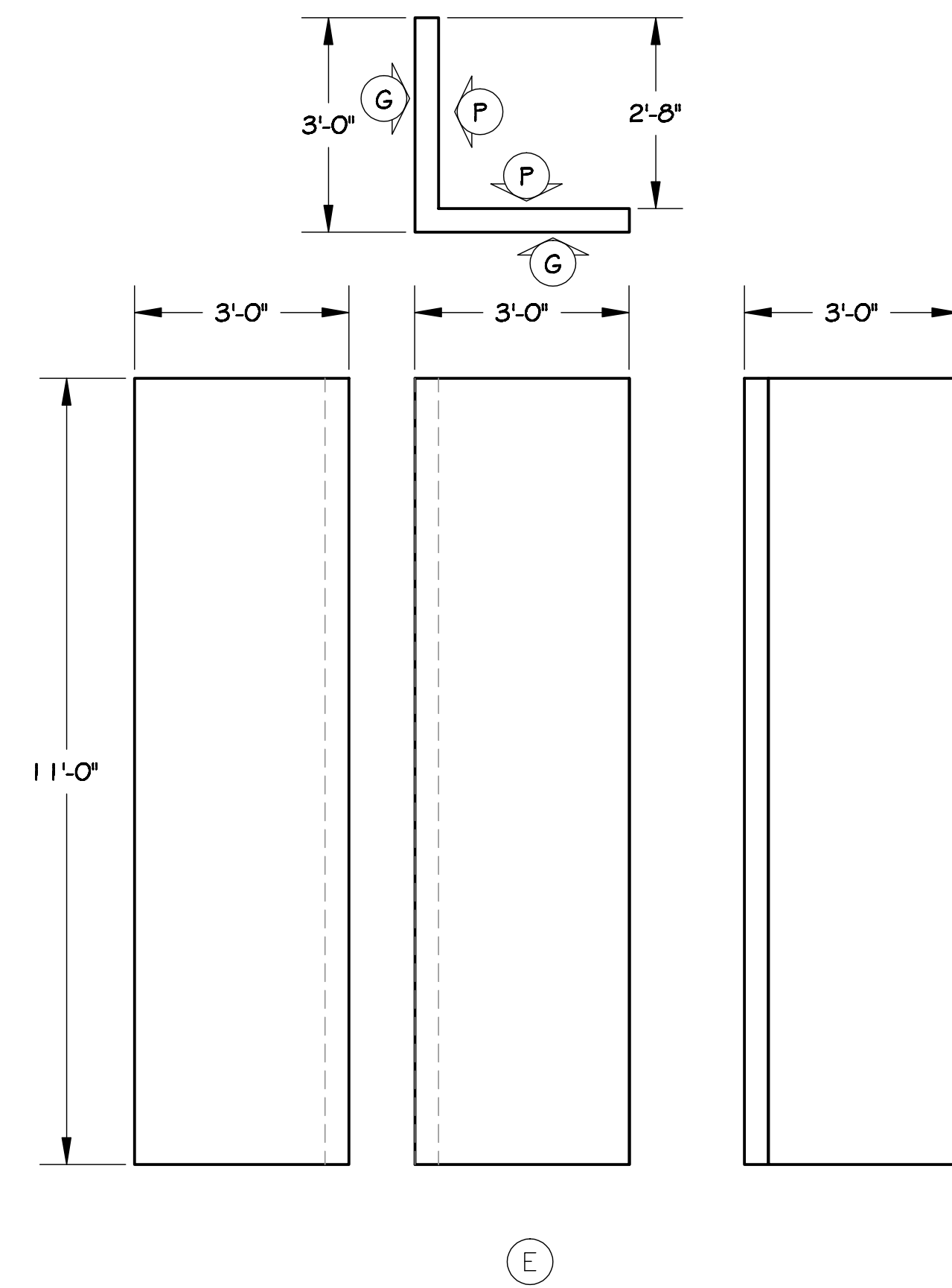
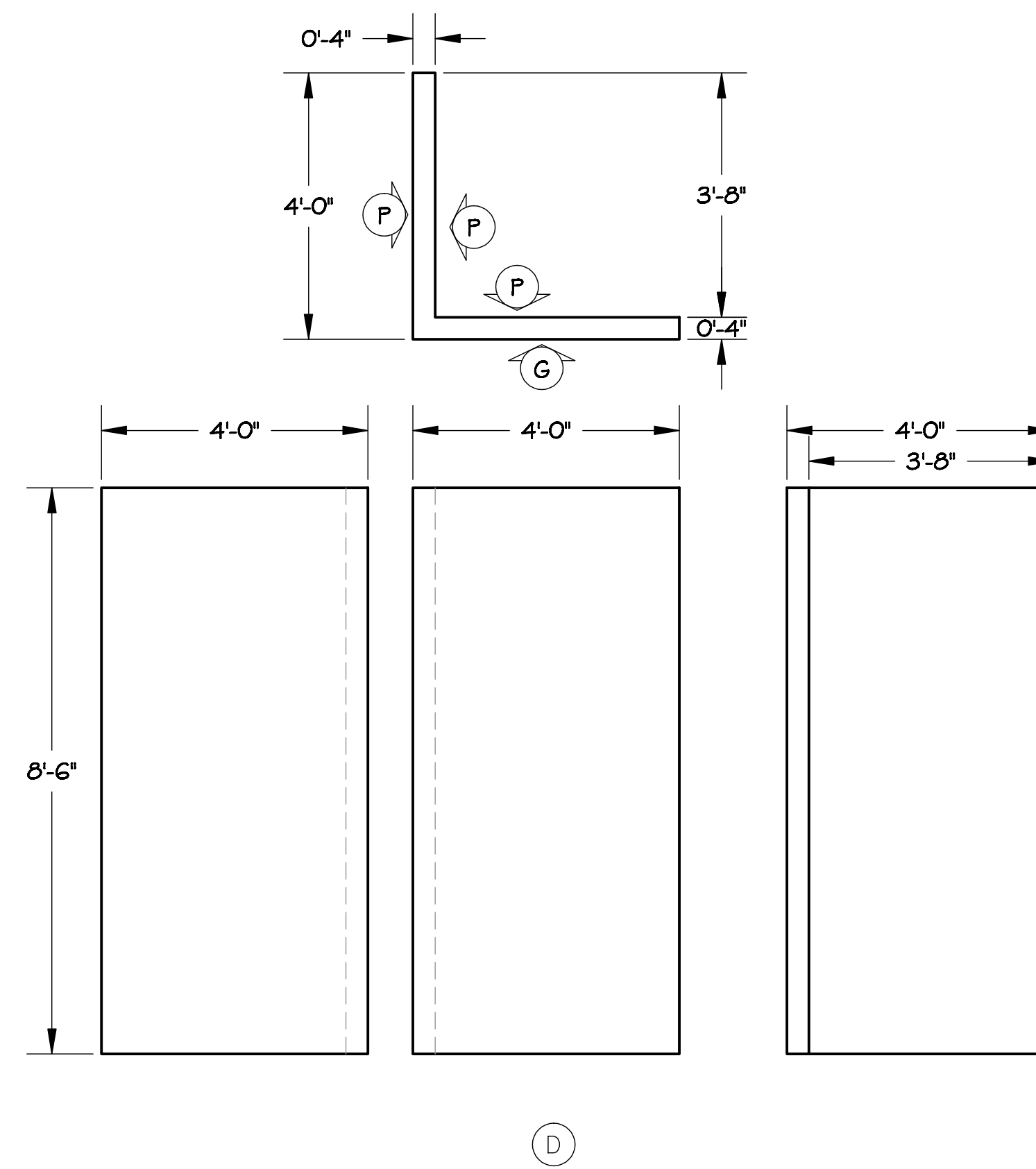
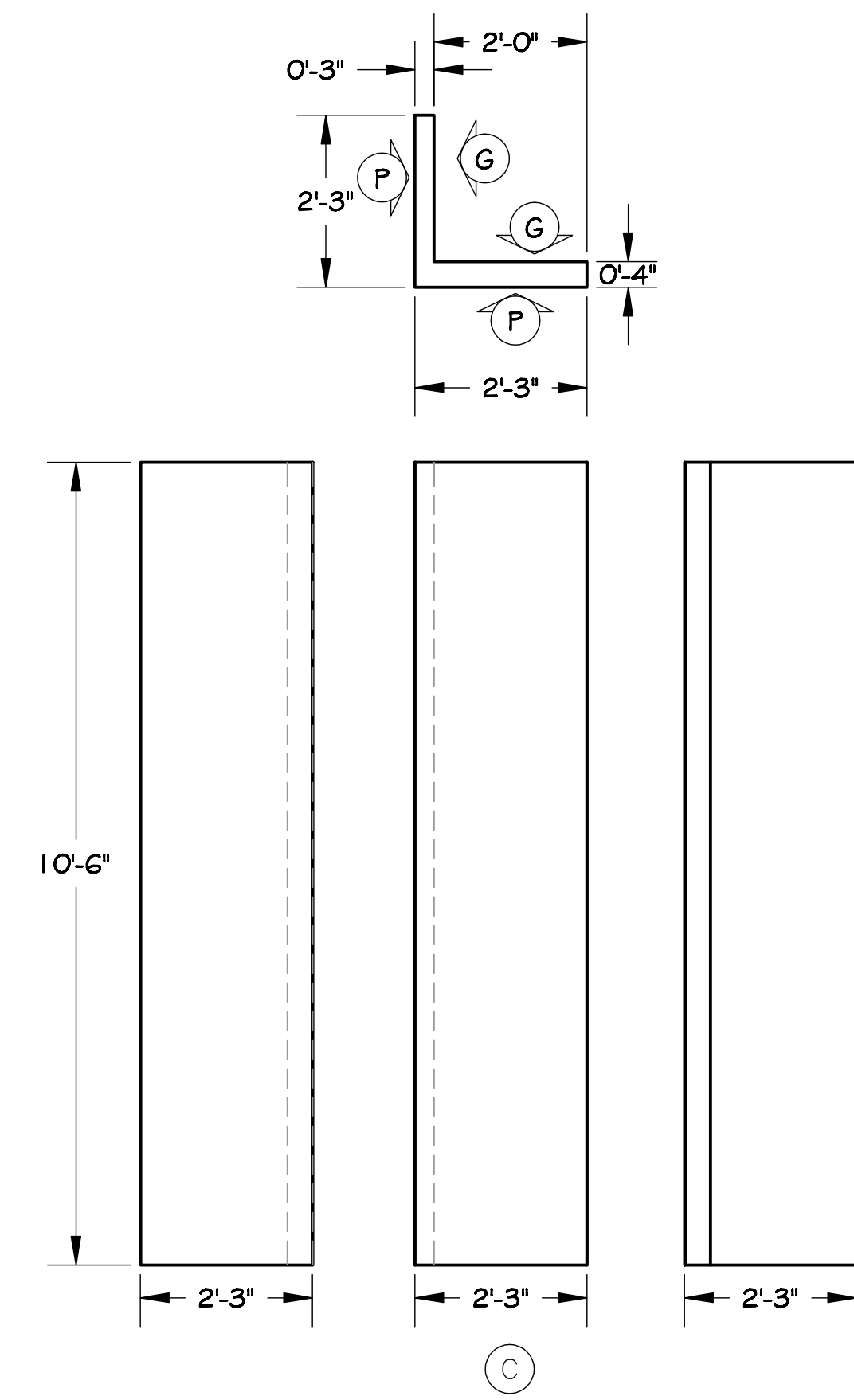
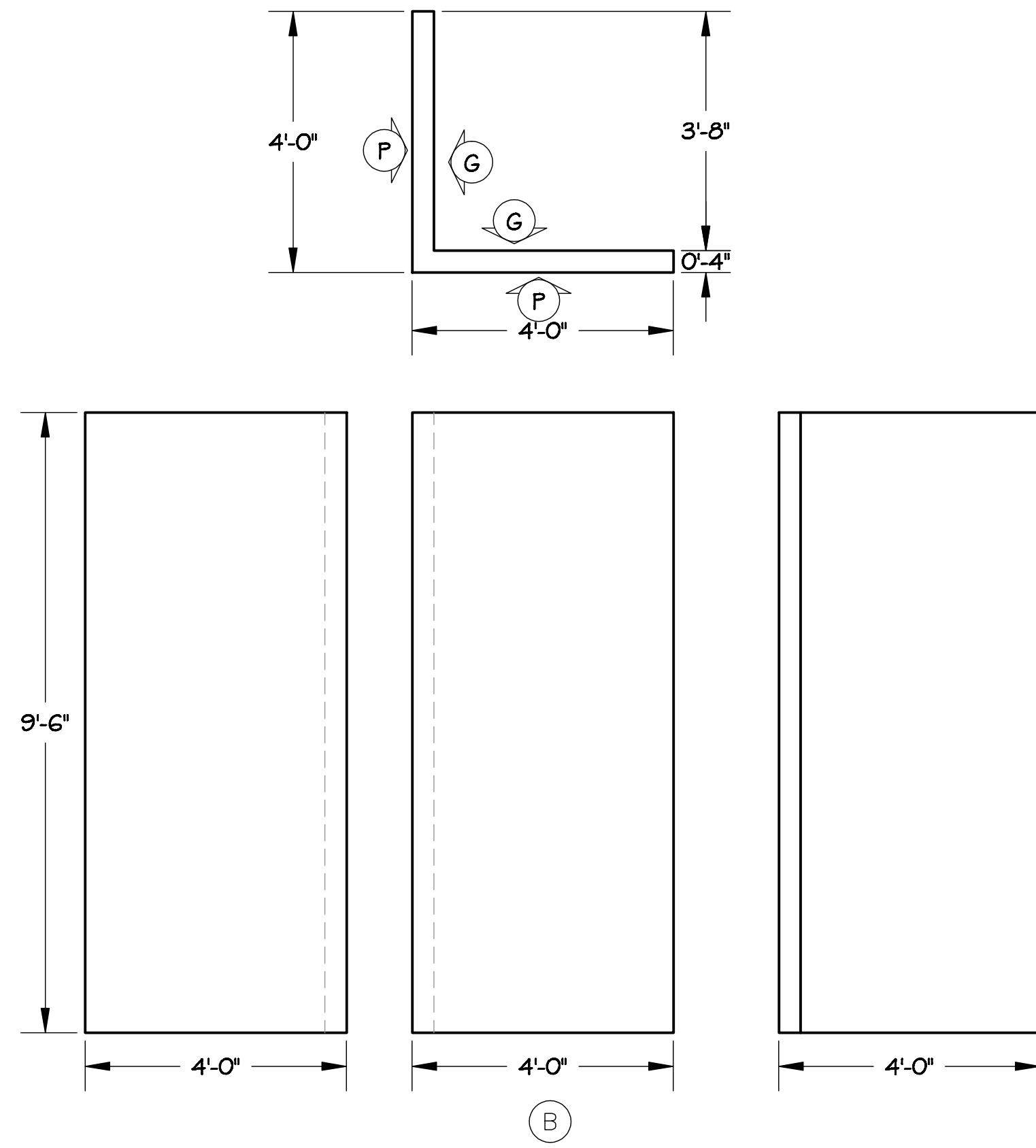
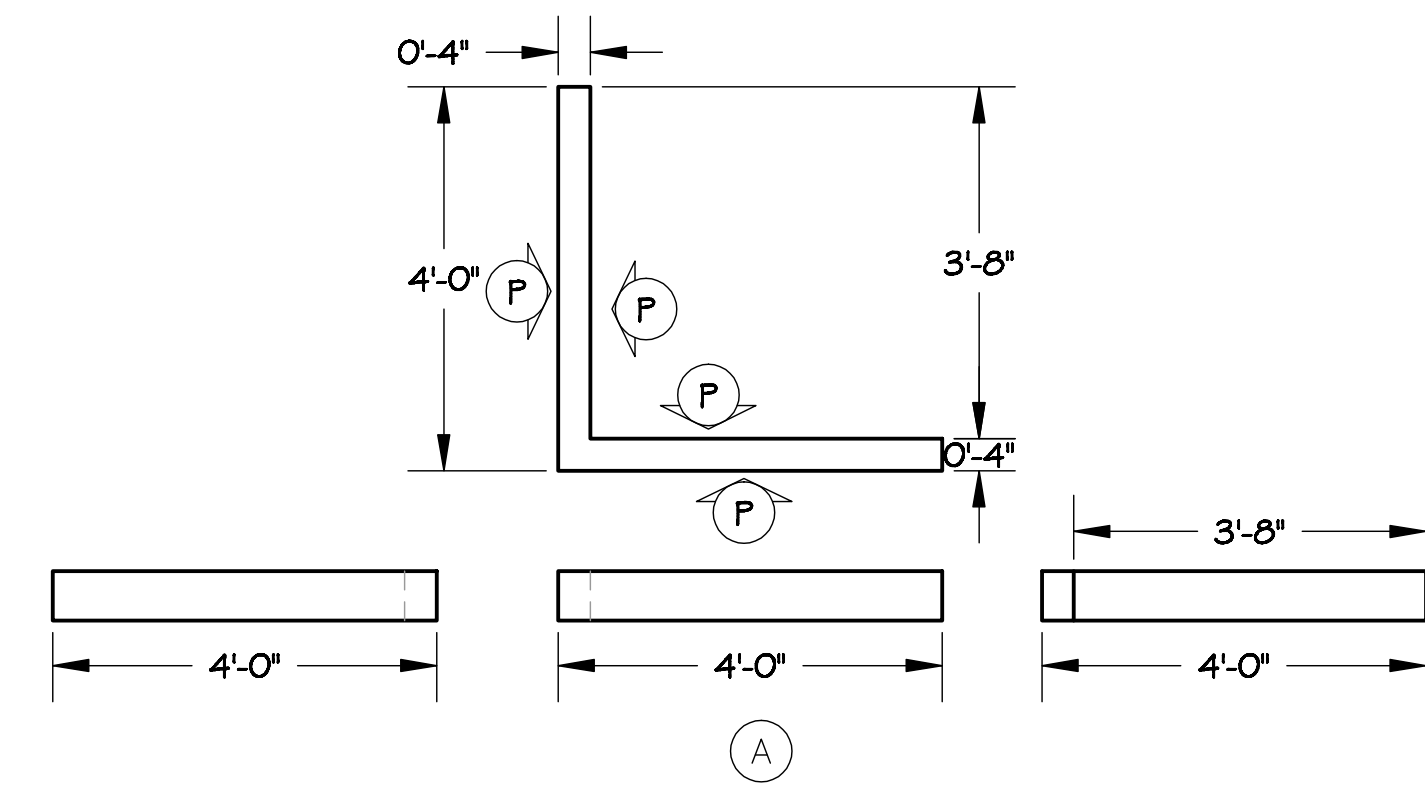
Build one of each.

All walls will have a durable, concrete surface texture over which painted detail will be applied.

Surfaces marked (G) will be painted with rough concrete detail. See "Backside Elevation." These sides are not seen well or at all by the audience.

Surfaces marked (P) will be painted with architectural detail. Each side will have a separate elevation. See specific elevations for painted detail.

Corners will be placed on concrete floor and remain in position during the show.



This is a reproduction of the original drawing. It is not to be used for construction purposes without the written consent of the architect. The architect is not responsible for the construction of the work shown in this drawing. The architect is not responsible for the construction of the work shown in this drawing. The architect is not responsible for the construction of the work shown in this drawing.

Revisions:

La Costa Theatre - Chicago
Secret Agent

Detail-Corner A-F

Organic Theatre Company

Director
Alexander Gahn
DRAWN BY
TJM
DATE
12 March 2006
SCALE:
1/2" = 1'-0"
DRAWING NUMBER
3
DRAWING DATA