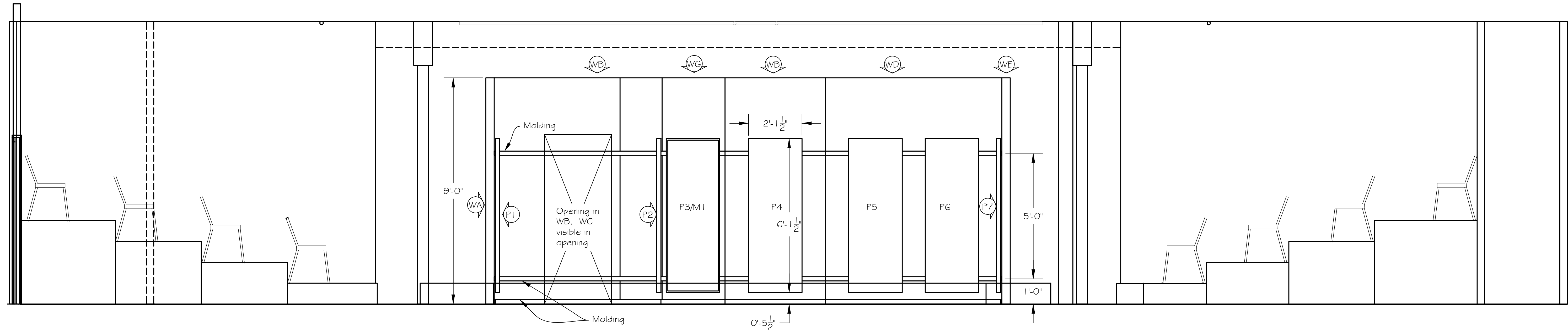


This is a representation of design concepts only! The designer takes no responsibility, and herewith disclaims liability, for the erection, engineering and/or use of any component or concept shown on this or any other drawing. It is the responsibility of the vendor companies to erect this design using properly engineered and approved materials, components and methods, including but not limited to local building, fire and safety codes, and all applicable O.S.H.A. standards.

All concepts, ideas, and design elements shown on this drawing and any other documentation are the exclusive intellectual property of Scenographix, Ltd., and may only be used for this project. Any other use is prohibited, unless express written permission has been granted by Scenographix, Ltd.



Note: The Caligula Scenery and Emmigrants Scenery Utilize many of the same walls and the same floor. Walls WA-WE Exist as part of the Emmigrants Set. Walls WF and WG are added for Caligula.

The Emmigrants pipes are not used.
The Emmigrants Door in WB is not used

Flat molding runs horizontally across all walls at the base, at 1'-0" and 6'-0" above the floor to hide Emmigrants Bolt Holes

Framed Fabric panels (P1-P7) are added to all walls as shown. The fabric panel on WG (P3) is Replaced with a mirror (M1) in all but one acts.



Caligula

Greenhouse Theatre - Upstairs

Front and Section Views

ACCOUNT EXECUTIVE

DRAWN BY
T McClellan

DATE
16 April 2013

SCALE:
1/2" = 1'-0"

DRAWING NUMBER

2

DRAWING DATA