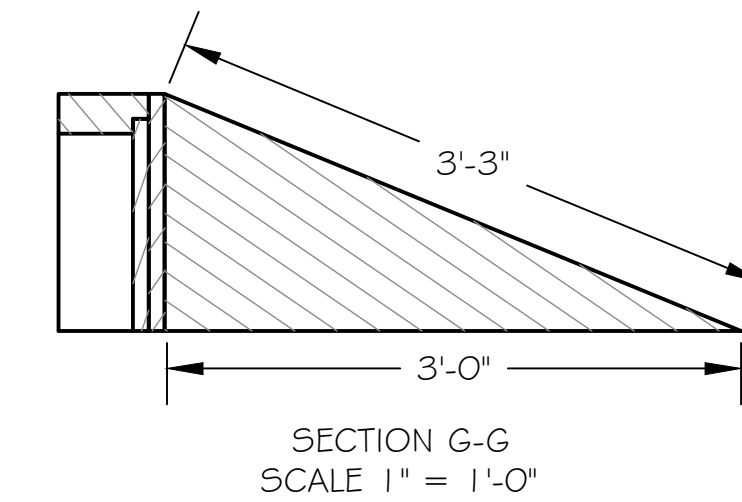
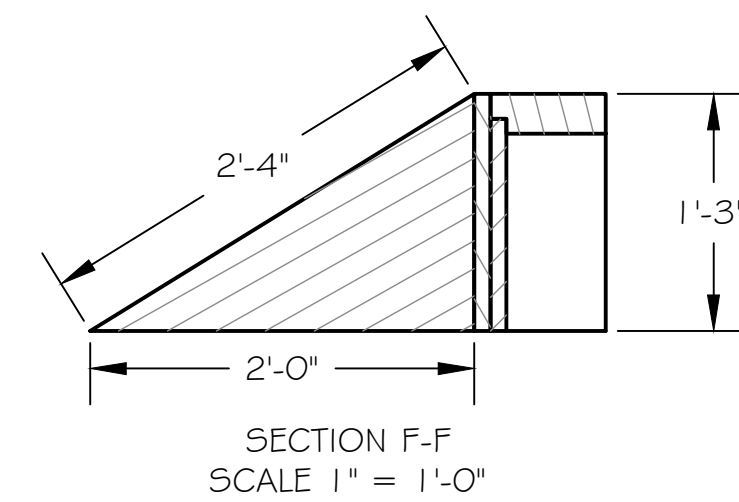
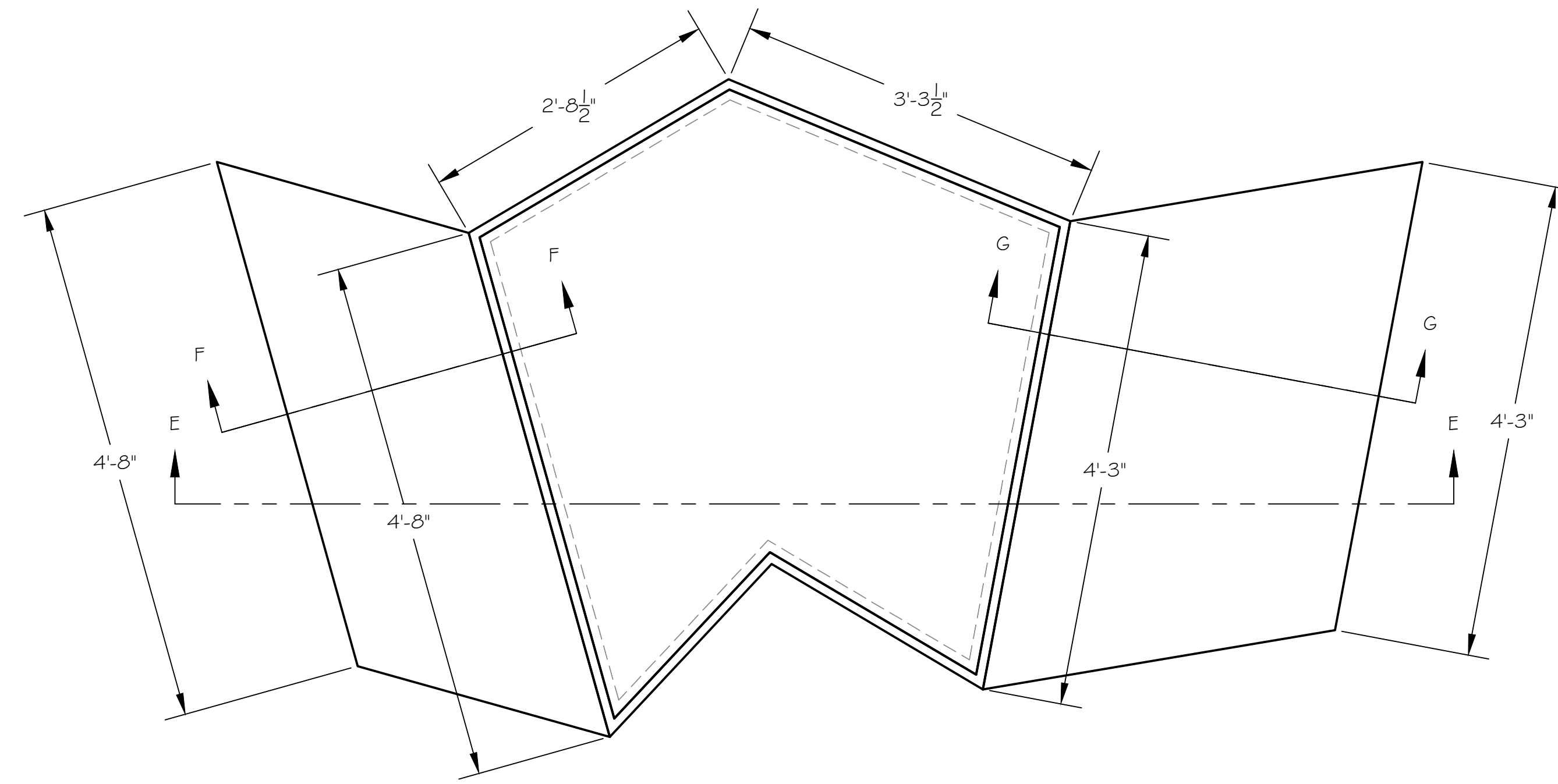


Floor and River Box Assembly.  
 Scale: 1/2" = 1'-0"  
 The floor is two parts, the river path and the main floor.  
 The main floor is installed for all shows.. It is 1/2" sheet material painted a solid color and sealed.

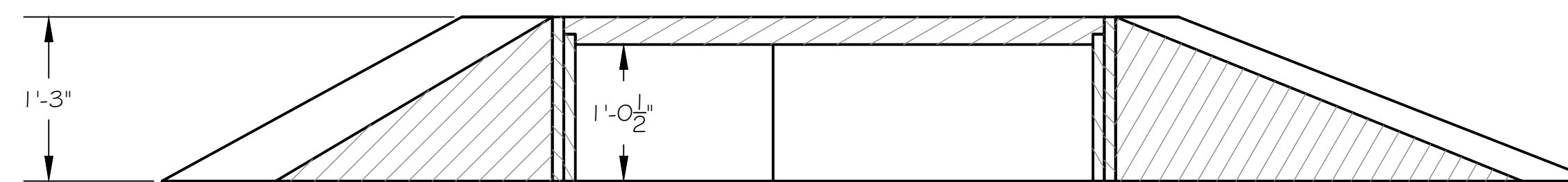
The river portion of th efloor is also 1/2" but is rough textured wood stained blue that is remeovable and able to be rplaced for other shows. The box, finished the same as the river floor is also removable so the floor is flat for other shows.



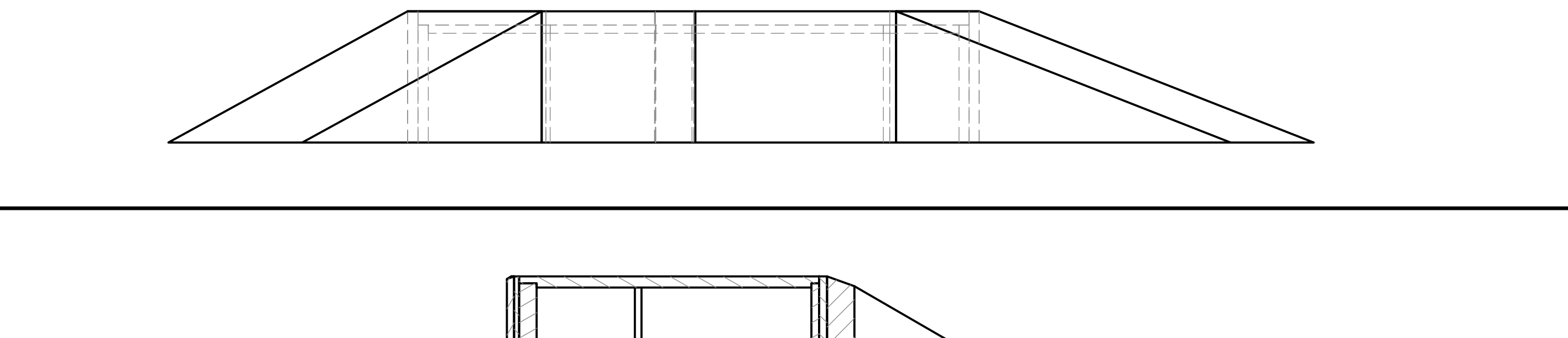
Box and Ramps  
 Scale: 1" = 1'-0"

This is walked on, jumped on and top is removable.  
 It is filled with shredded material to act as dirt and water that will be shoveled out..

Finishe with textured lumber stained blue same as river path in floor.



SECTION E-E  
 SCALE 1" = 1'-0"



SECTION D-D  
 SCALE 1/2" = 1'-0"

This is a representation of design concepts only! The designer takes no responsibility, and herewith disclaims liability, for the erection, engineering and/or use of any component or concept shown on this or any other drawing. It is the responsibility of the vending companies to erect this design using properly engineered and approved materials, components and methods, including but not limited to local building, fire and safety codes, and all applicable O.S.H.A. standards.

All concepts, ideas, and design elements shown on this drawing and any other documentation are the exclusive intellectual property of Scenographix, Ltd. and may only be used for this project. Any other use is prohibited, unless express written permission has been granted by Scenographix, Ltd.

# Diviners

## NCC Meilly Swallow Floor and River Box

ACCOUNT EXECUTIVE	DRAWING NUMBER
DRAWN BY T. McClellan	7
DATE 13 February 2014	
SCALE As Noted	DRAWING DATA
REVISION NUMBER	