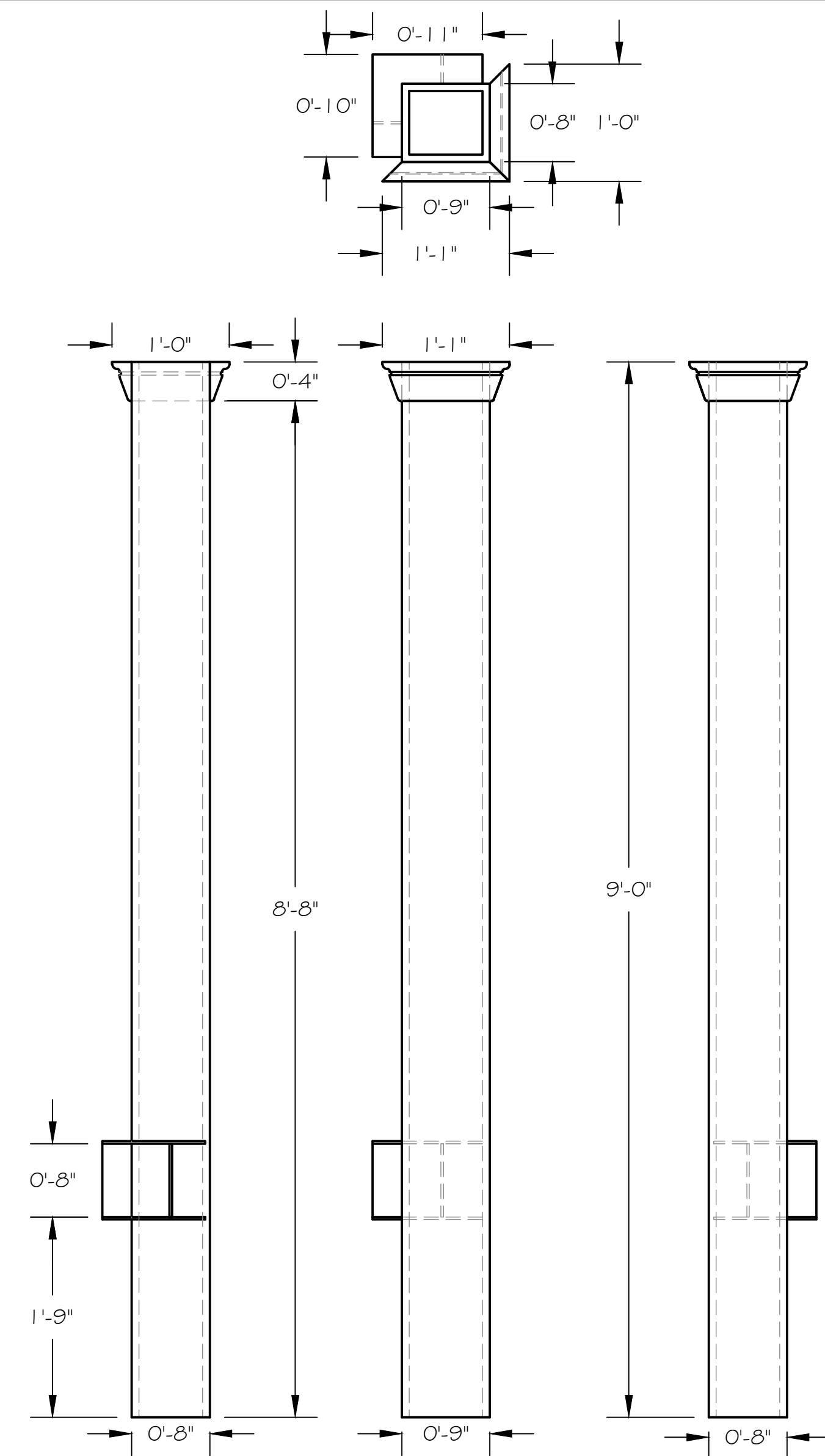
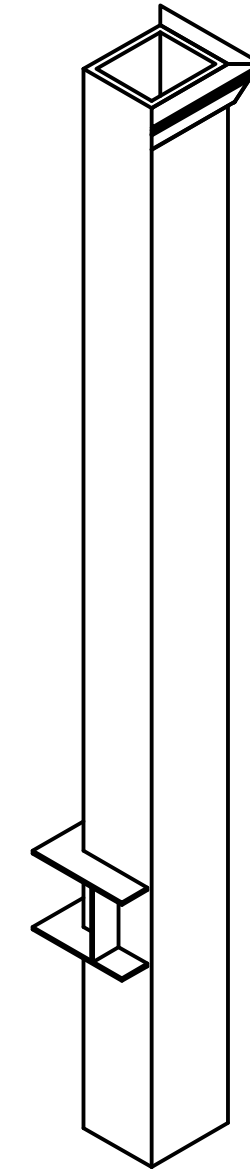


SECTION H-H
SCALE 1" = 1'-0"

Cellists Window
Scale: 1" = 1'-0" (1:12)
Build 1
NO Glazing.
Will Rig from above and be cabled to the floor.
Cellist will sit behind this and play the cello. Height off the floor will be determined with the cellist at the time of installation.



Column Masking.
Scale: 1" = 1'-0" (1:12)
Build and install around column.
Inside should touch the column in a number of places since actors will lean against it and be thrown against it.
Finish with paint.
Shelves on the back will hold small props.

This is a representation of design concepts only! The designer takes no responsibility, and herewith disclaims liability, for the erection, engineering and/or use of any component or concept shown on this or any other drawing. It is the responsibility of the vending companies to erect this design using properly engineered and approved materials, components and methods, including but not limited to local building, fire and safety codes, and all applicable O.S.H.A. standards.
All concepts, ideas, and design elements shown on this drawing and any other documentation are the exclusive intellectual property of Scenographix, Ltd., and may only be used for this project. Any other use is prohibited, unless express written permission has been granted by Scenographix, Ltd.

The Melancholy Play
Greenhouse Theatre - Upstairs
Walls, Column, Cellist Window

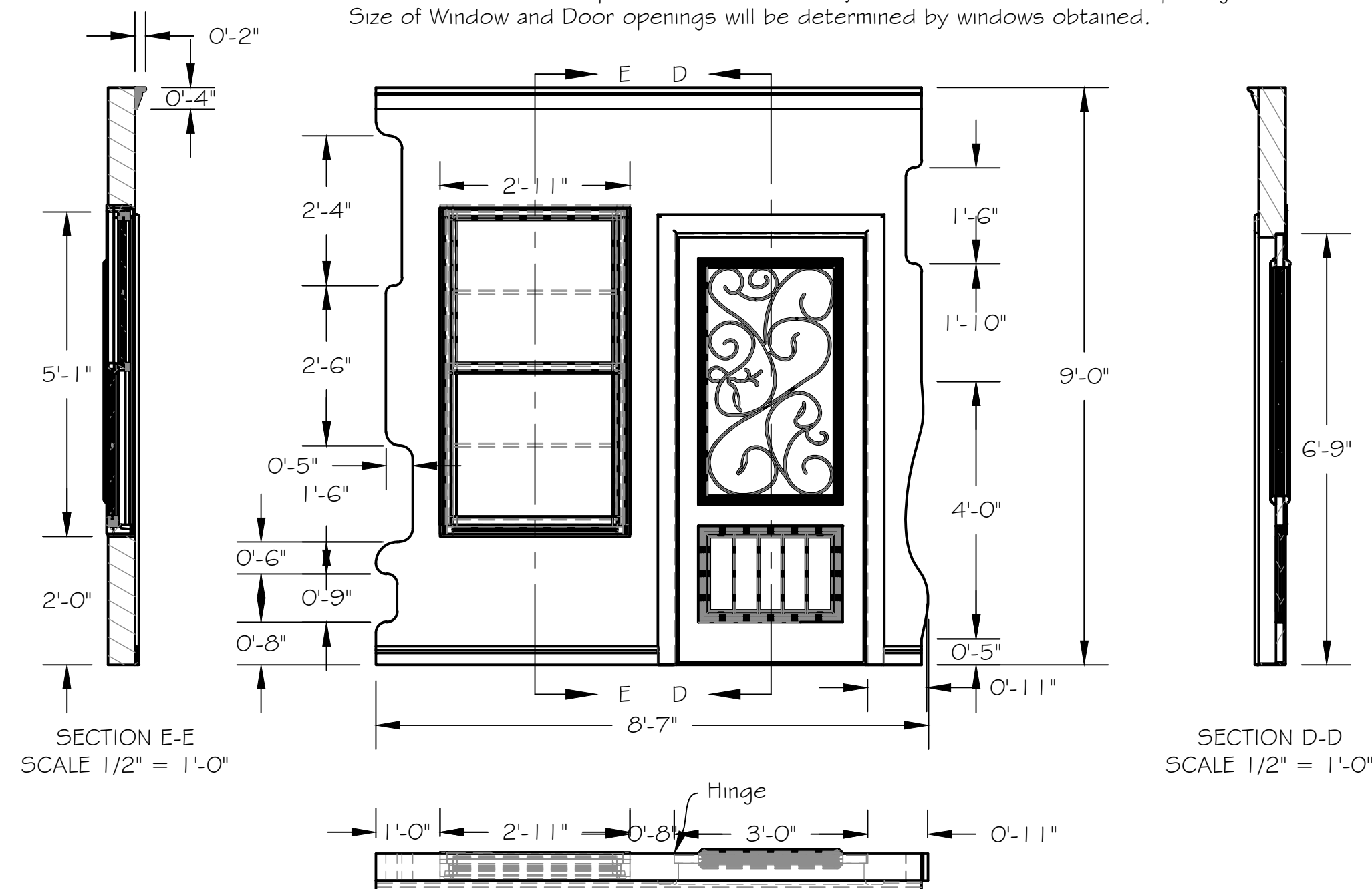
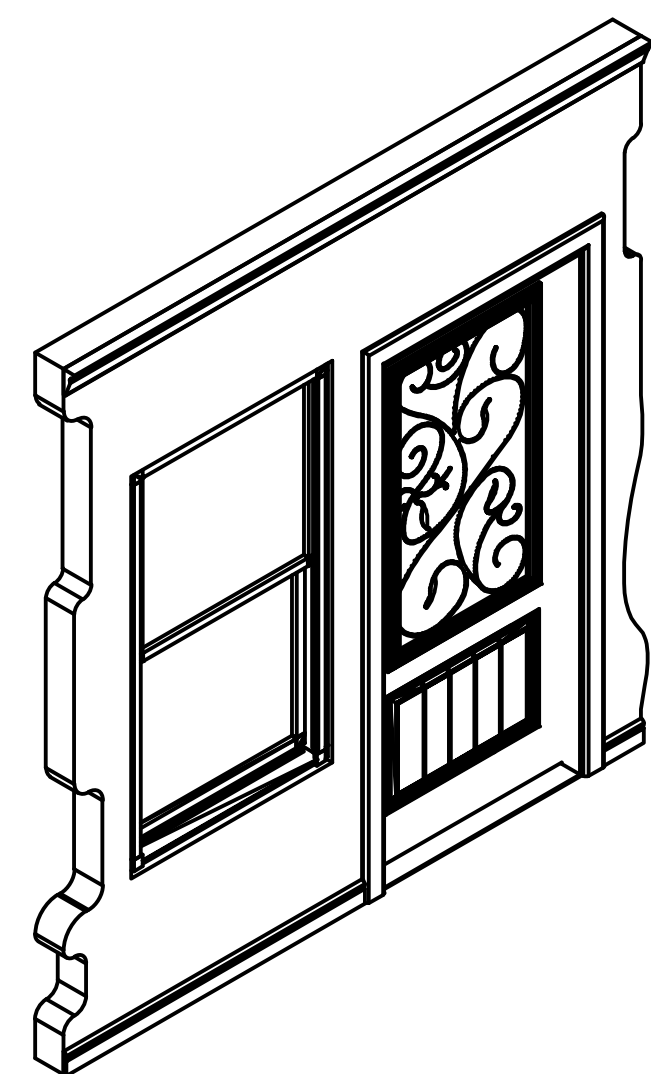


Director
Laura Sturm
Designer
T McClellan
DATE
18 January 2019
SCALE:
1/2" = 1'-0"
DRAWING NUMBER

3

DRAWING DATA

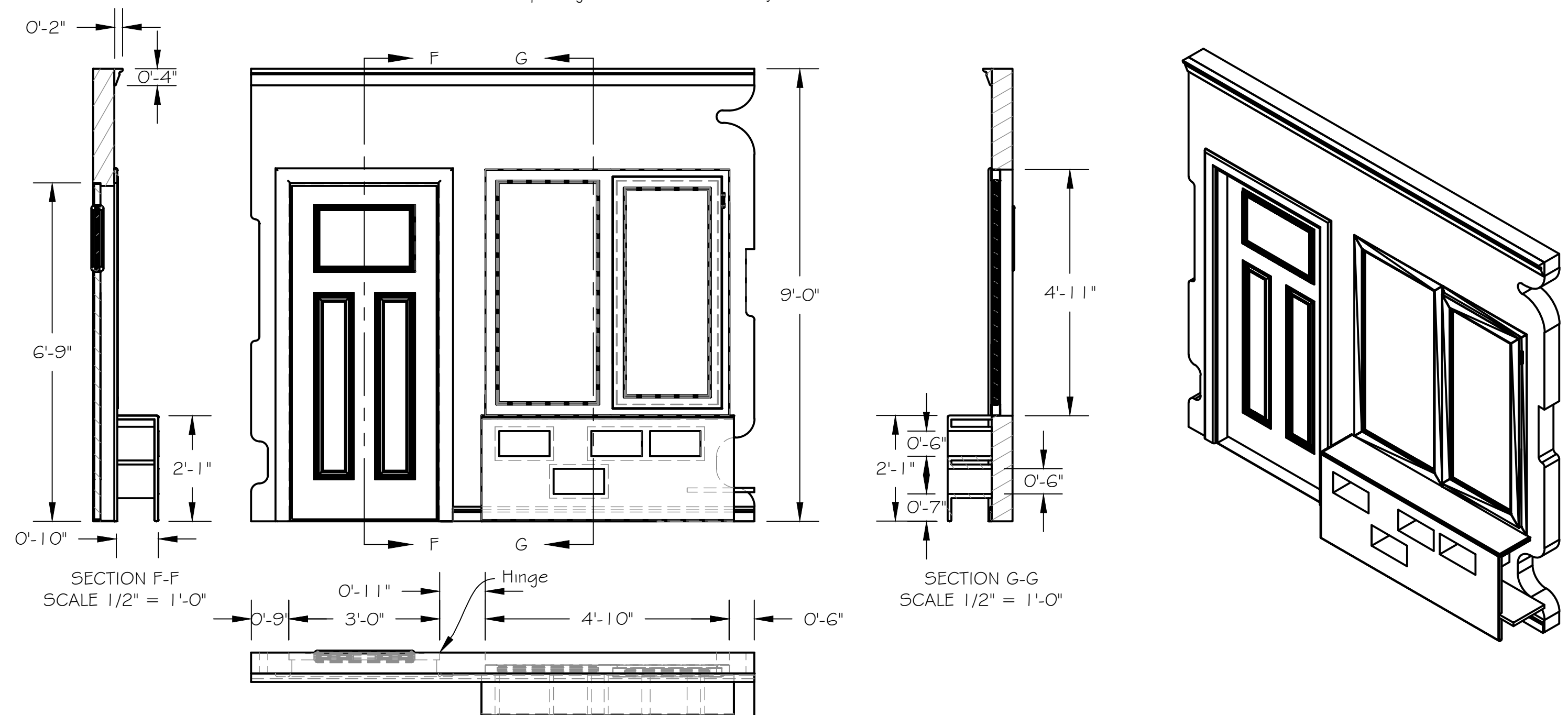
Stage Right Wall
Scale: 1/2" = 1'-0" (1:24)
Build 1
NO Glazing.
Door Opens off stage and will be slammed. Double Hung Window opens on bottom only.
Cover main part of wall with wall paper-tbd.
Molding, window, and door are finished in a warm wood finish.
Decoration on door shape will be determined by the door obtained for this opening.
Size of Window and Door openings will be determined by windows obtained.



SECTION E-E
SCALE 1/2" = 1'-0"

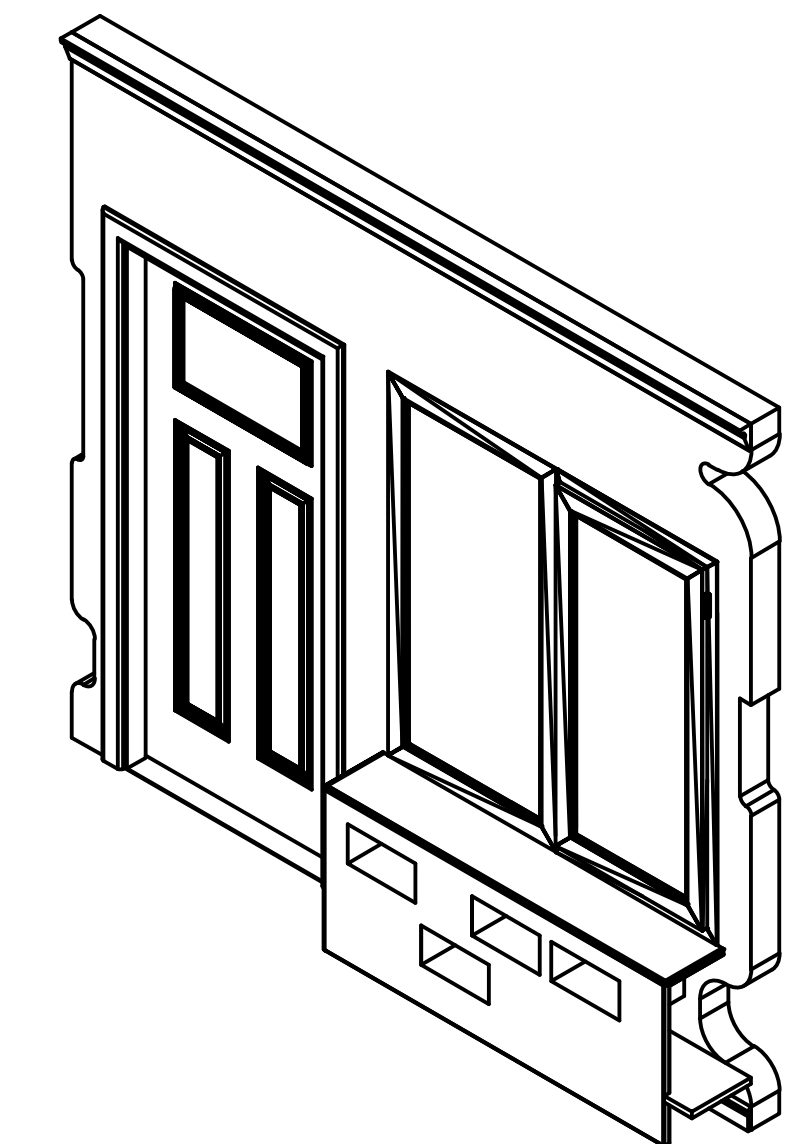
SECTION D-D
SCALE 1/2" = 1'-0"

Stage Left Wall
Scale: 1/2" = 1'-0" (1:24)
Build 1
NO Glazing.
Door Opens off stage and will be slammed. Downstage side of window slides open upstage.
Wall will be finished with textured green paint.
Molding, window, and door are finished in a warm paint.
Size of Window and Door openings will be determined by windows obtained.



SECTION F-F
SCALE 1/2" = 1'-0"

SECTION G-G
SCALE 1/2" = 1'-0"



Stage