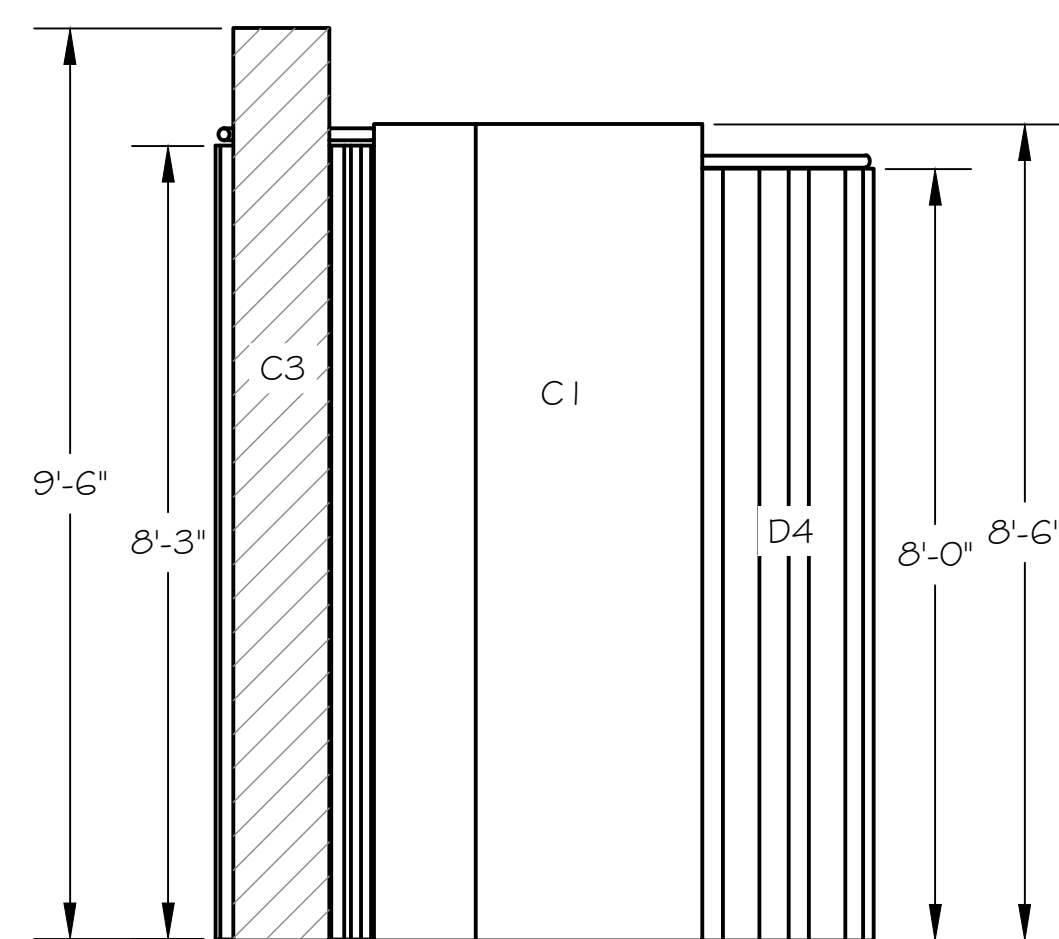
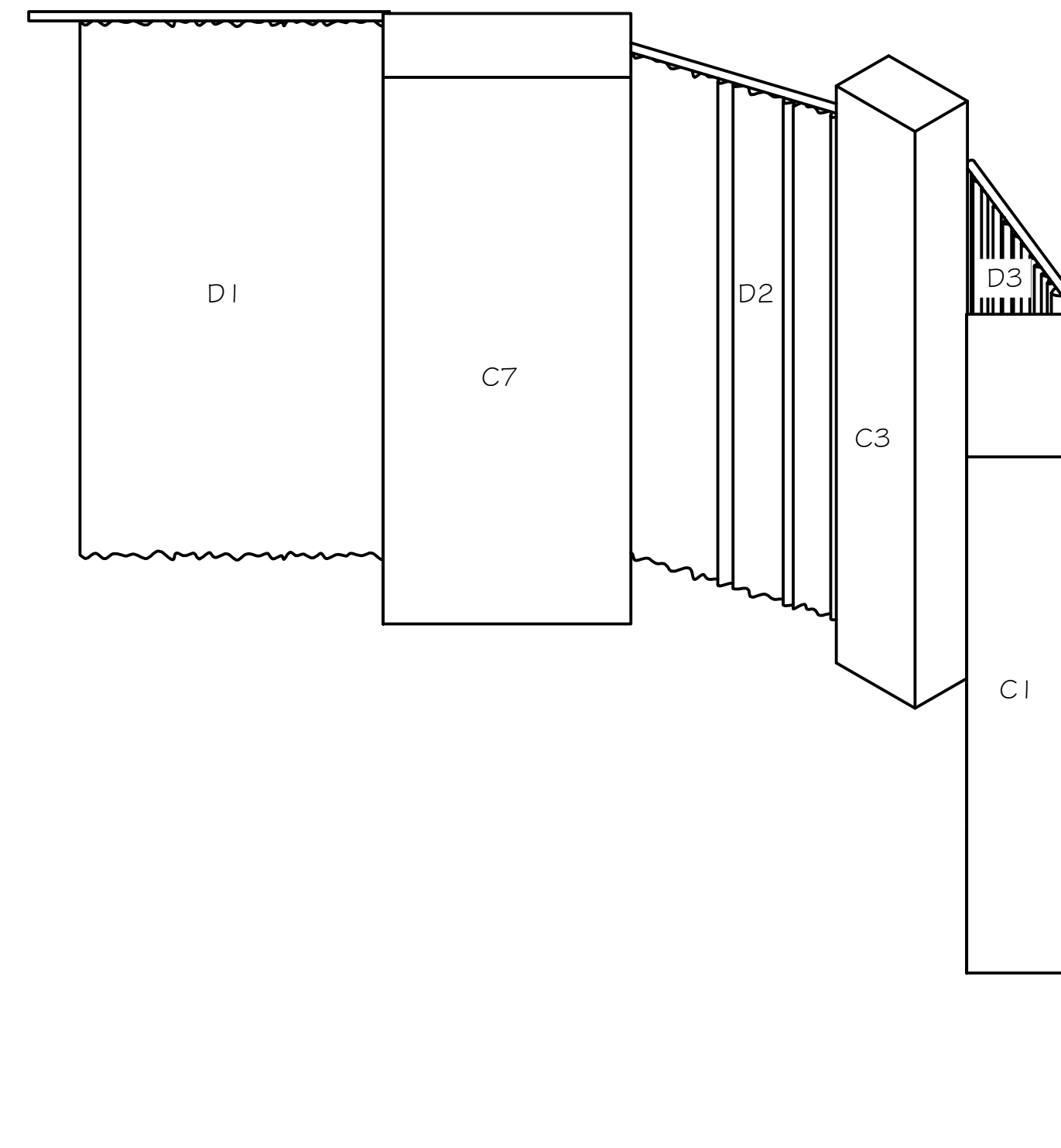
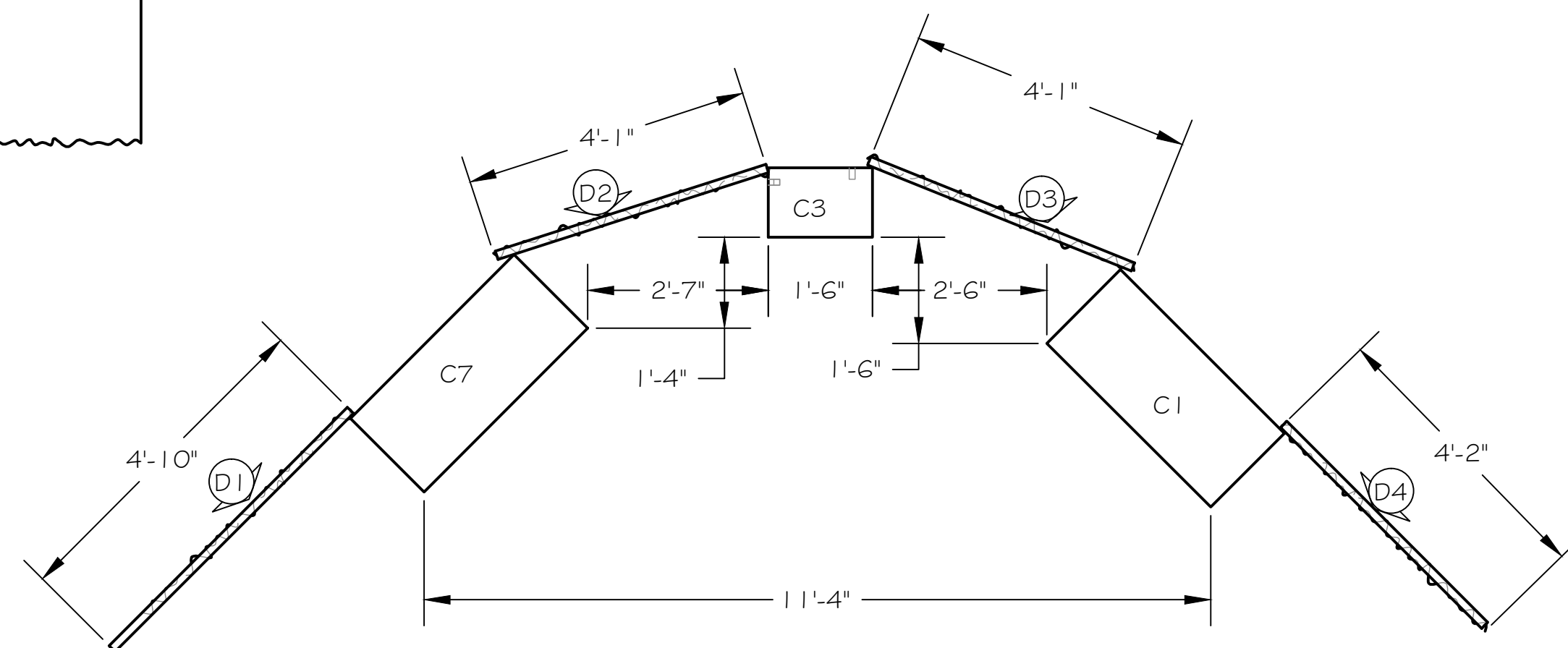
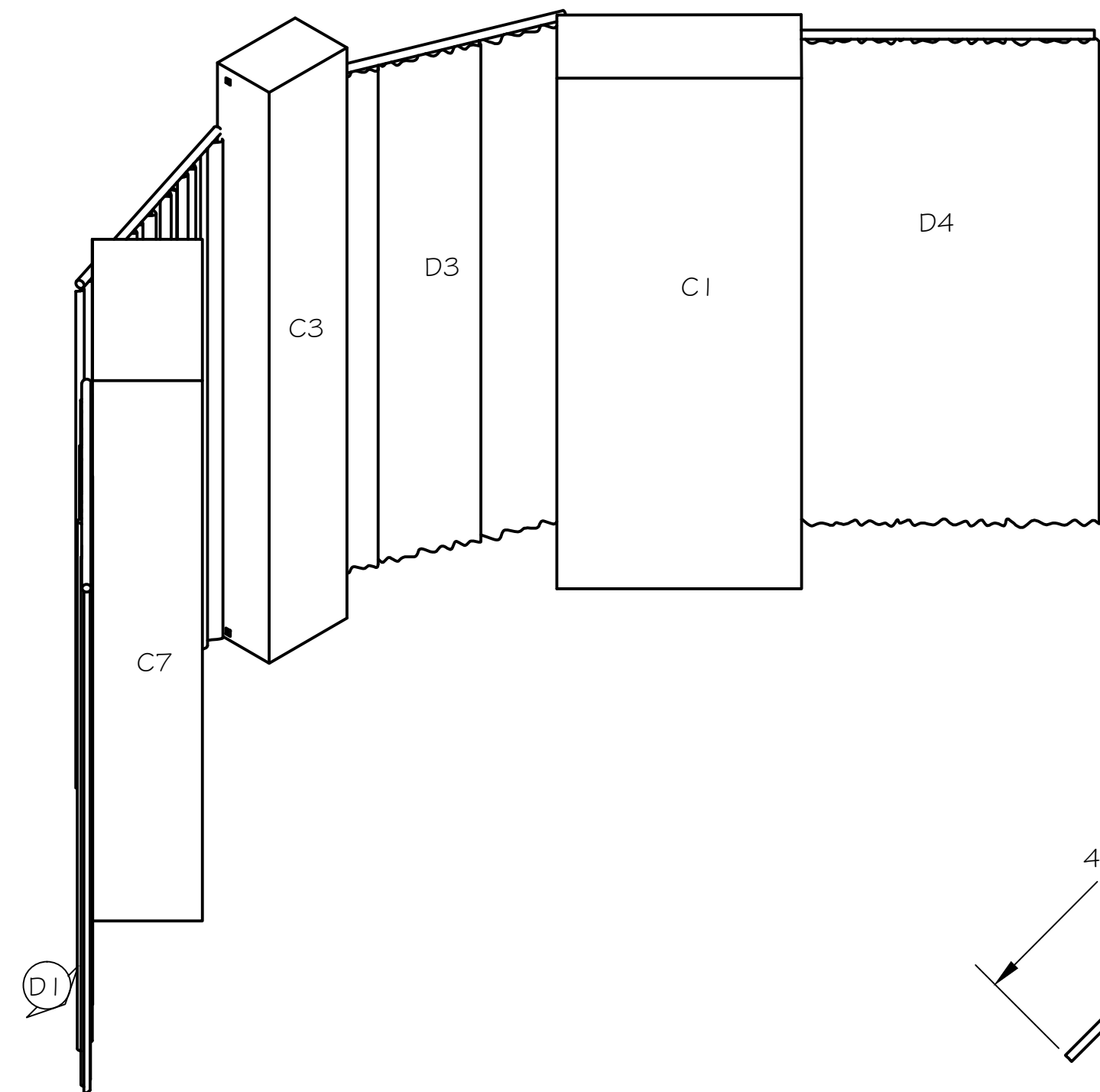
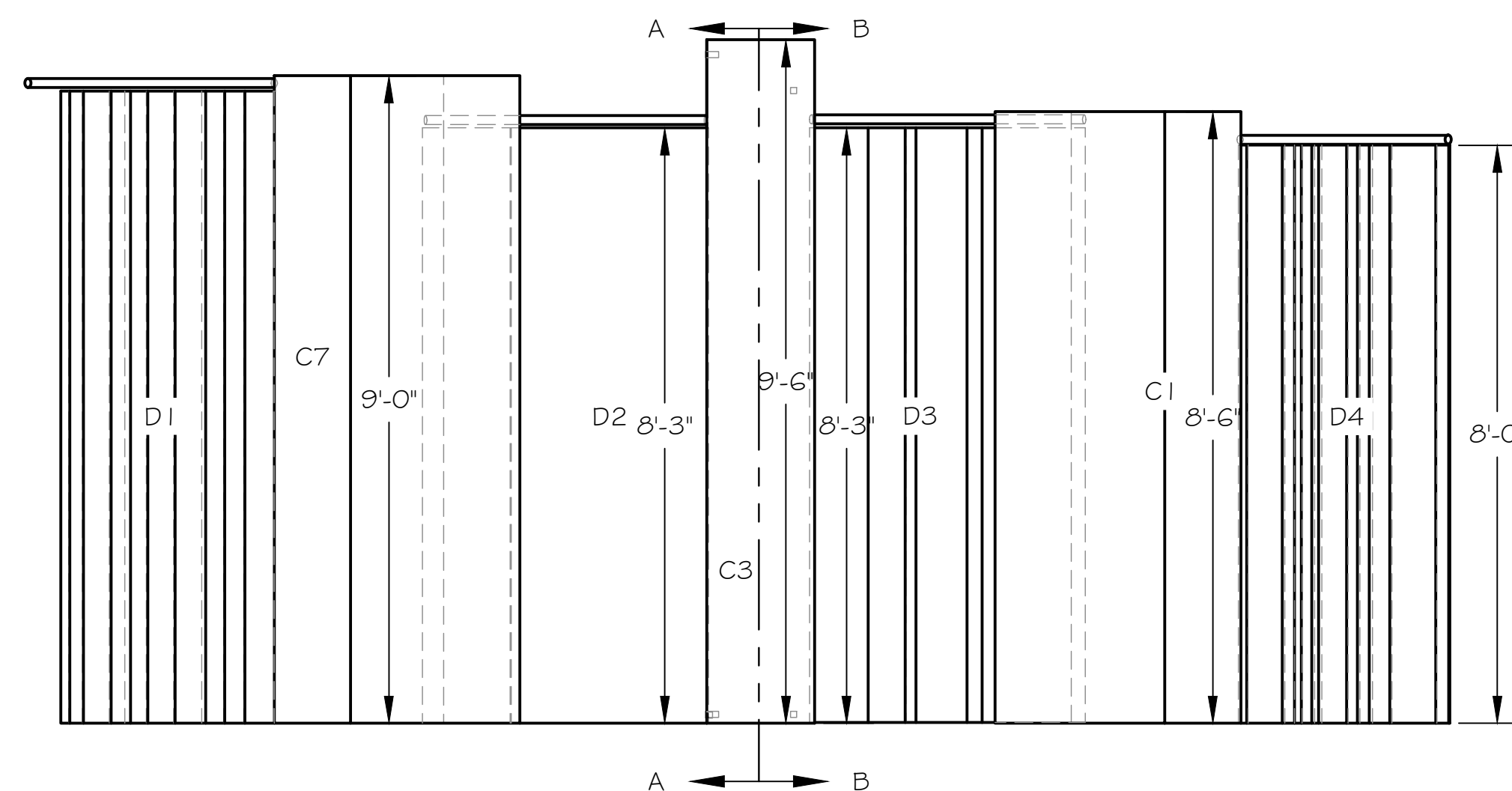


This is a representation of design concepts only! The designer takes no responsibility, and herewith disclaims liability, for the erection, engineering and/or use of any component or concept shown on this or any other drawing. It is the responsibility of the vendor companies to erect this design using properly engineered and approved materials, components and methods, including but not limited to local building, fire and safety codes, and all applicable O.S.H.A. standards.

All concepts, ideas, and design elements shown on this drawing and any other documentation are the exclusive intellectual property of Scenographix, Ltd., and may only be used for this project. Any other use is prohibited, unless express written permission has been granted by Scenographix, Ltd.



SECTION B-B
SCALE 1/2" = 1'-0"



SECTION A-A
SCALE 1/2" = 1'-0"

U.S. Arches
Each column is a column from Lapin Agile. It is identified with its Lapin Label.
All sides are finished in a semi-gloss dark wood stain - same as Lapin.

A piece of drapery shown with 50% fullness is behind each arch. Widths are shown with 50% fullness. Attach to thin, gold pipes with gold rings.
Supply with materials to easily tab each panel.
This will be a white poly silk.

Drapery rod and Header must be easily and securely attached so that it is easily removable for Lapin Agile.
Discuss attachment techniques with designer before implementing.

Tartuffe
U.S. Archways



ACCOUNT EXECUTIVE

DRAWN BY
T McClellan

DATE
18 December 2014

SCALE:
1/2"=1'-0"

DRAWING NUMBER

5

DRAWING DATA