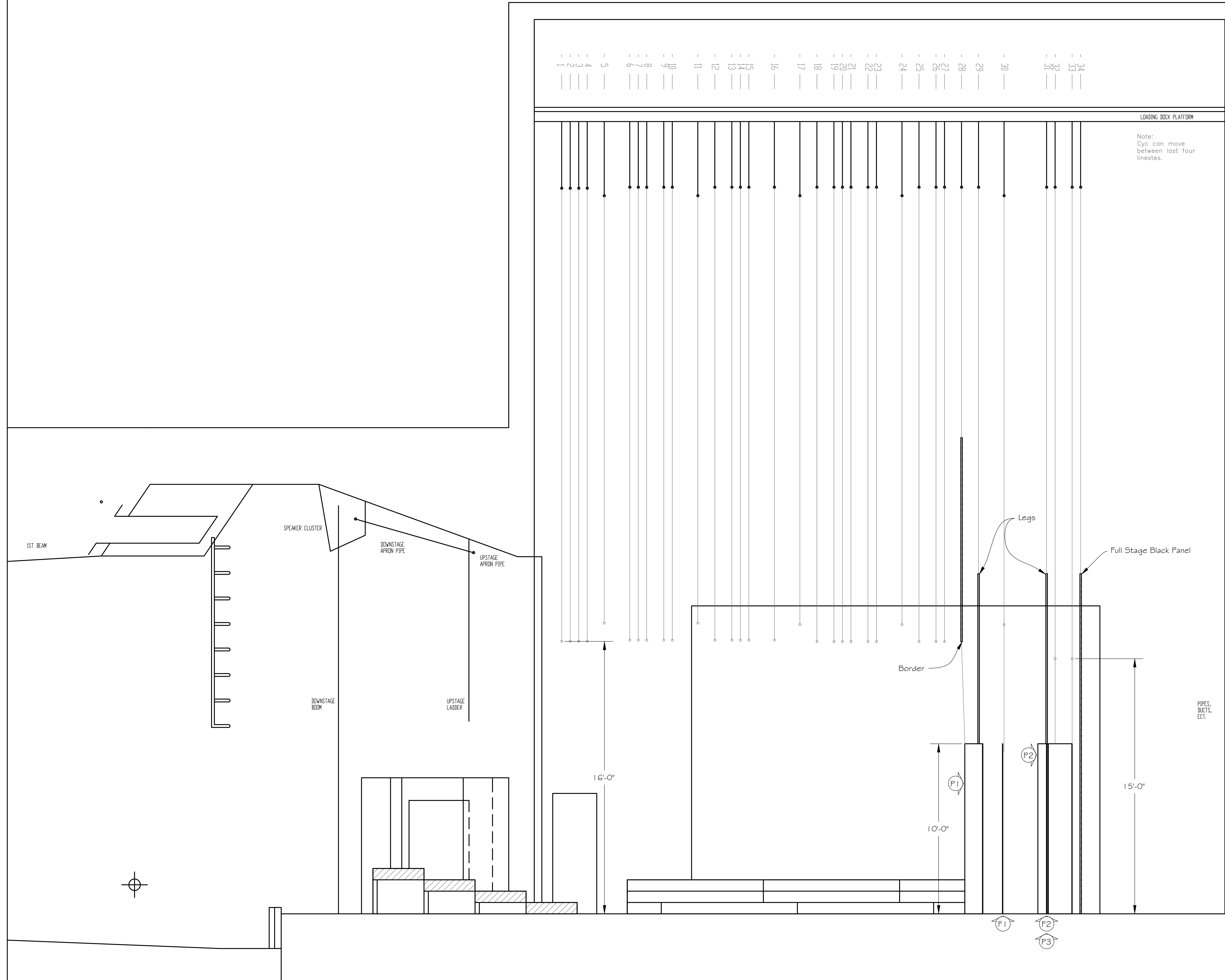


This is a representation of design concepts only! The designer takes no responsibility, and herewith disclaims liability, for the erection, engineering and/or use of any component or concept shown on this or any other drawing. It is the responsibility of the vending companies to erect this design using properly engineered and approved materials, components and methods, including but not limited to local building, fire and safety codes, and all applicable O.S.H.A. standards.

All concepts, ideas, and design elements shown on this drawing and any other documentation are the exclusive intellectual property of Scenographix, Ltd., and may only be used for this project. Any other use is prohibited, unless express written permission has been granted by Scenographix, Ltd.



Lineset	Description	Notes
1	Front Border	trim set visually
2	Grand Drape	Out to grid.
3		
4		
5	Electric	
6		
7		
8		
9		
10		
11		
12		
13		
14		
15		
16		
17	Electric	
18		
19		
20		
21		
22		
23		
24	Electric	
25		
26		
27		
28	Black border, P1,P6	
29	Black Legs, P1,P6	Panels tail down from batten
30	Electric - and F1	F1 tails down from batten; height determined by LD
31	Black Legs, F2, P2-P5	Panels tail down from batten
32	White Cyc	Not used - Grid it.
33		
34	Full Stage Black Panel	

(P?) Refers to an unframed panel of Lee 129 Filter, 4' wide.

(B?) Refers to a Black Fabric Background Piece.

(F?) Refers to a 10' Wide fabric panel. F1 has significant transparency similar to scrim (could be scrim.) F2 is opaque but translucent.

Theophilus North

O'Connell Theatre - NIU

Section

Northern Illinois University
School of Theatre and Dance

Stephens Building, DeKalb, IL

ACCOUNT EXECUTIVE
A Gelman
DRAWN BY
T McClellan
DATE
21 August 2011
SCALE:
3/8"=1'-0"
DRAWING NUMBER

2

DRAWING DATA